

IP6K2 Polyclonal Antibody

Catalog_no :	AT2382
Applications :	WB,IHC-p,IF,ELISA
Reactivity :	Human,Mouse,Rat
Category :	抗原抗体
Size :	100µg/50µg/20µg
Gene_name :	IP6K2
Protein_name :	Inositol hexakisphosphate kinase 2
Humangene_id :	51447
Humanswissprot_no :	Q9UHH9
Mousegene_id :	76500
Mouseswissprot_no :	Q80V72
Ratgene_id :	59268
Ratswissprot_no :	Q9R0U1
Immunogen :	The antiserum was produced against synthesized peptide derived from human IP6K2. AA range:161-210
Specificity :	IP6K2 Polyclonal Antibody detects endogenous levels of IP6K2 protein.
Formulation :	Liquid in PBS containing 50% glycerol, 0.5% BSA and 0.02% sodium azide.
Source :	Rabbit
Dilution :	Western Blot: 1/500 - 1/2000. Immunohistochemistry: 1/100 - 1/300. Immunofluorescence: 1/200 - 1/1000. ELISA: 1/40000. Not yet tested in other applications.
Purification :	The antibody was affinity-purified from rabbit antiserum by affinity-chromatography using epitope-specific immunogen.
Concentration :	1 mg/ml
Storage_stability :	-20°C/1 year

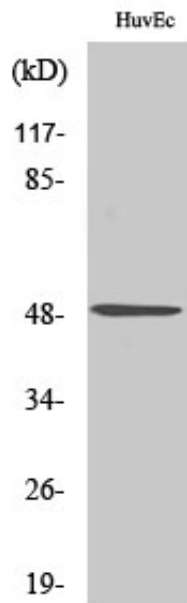


MsdS : [MSDS_Antibody.pdf](#)

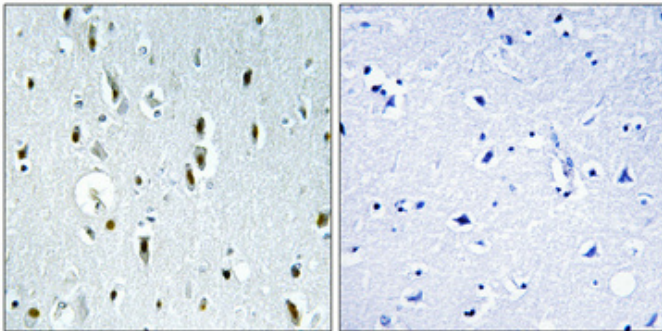
Other_name : IP6K2; IHPK2; TCCCIA00113; Inositol hexakisphosphate kinase 2; InsP6 kinase 2; P(i)-uptake stimulator; PiUS

Molecular Weight : 49KD

Product Images



Western Blot analysis of various cells using IP6K2 Polyclonal Antibody cells nucleus extracted by Minute TM Cytoplasmic and Nuclear Fractionation kit (SC-003, Inventbiotech, MN, USA).



Immunohistochemical analysis of paraffin-embedded Human brain. Antibody was diluted at 1:100(4°, overnight). High-pressure and temperature Tris-EDTA, pH8.0 was used for antigen retrieval. Negative control (right) obtained from antibody was pre-absorbed by immunogen peptide.