

iPLA2 γ Polyclonal Antibody

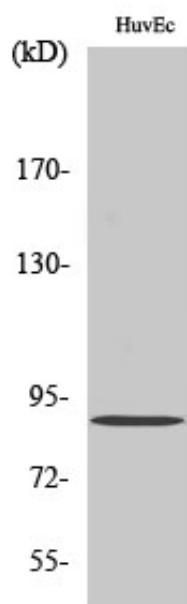
Catalog_no :	AT2383
Applications :	WB,ELISA
Reactivity :	Human,Mouse
Category :	抗原抗体
Size :	100 μ g/50 μ g/20 μ g
Gene_name :	PNPLA8
Protein_name :	Calcium-independent phospholipase A2-gamma
Humangene_id :	50640
Humanswissprot _no :	Q9NP80
Mousegene_id :	67452
Mouseswissprot _no :	Q8K1N1
Immunogen :	The antiserum was produced against synthesized peptide derived from human PNPLA8. AA range:691-740
Specificity :	iPLA2 γ Polyclonal Antibody detects endogenous levels of iPLA2 γ protein.
Formulation :	Liquid in PBS containing 50% glycerol, 0.5% BSA and 0.02% sodium azide.
Source :	Rabbit
Dilution :	Western Blot: 1/500 - 1/2000. ELISA: 1/40000. Not yet tested in other applications.
Purification :	The antibody was affinity-purified from rabbit antiserum by affinity-chromatography using epitope-specific immunogen.
Concentration :	1 mg/ml
Storage_stability :	-20°C/1 year
Msds :	MSDS_Antibody.pdf
Other_name :	PNPLA8; IPLA22; IPLA2G; BM-043; Calcium-independent phospholipase A2-gamma; Intracellular membrane-associated calcium-independent phospholipase A2 gamma; iPLA2-gamma; PNPLA-gamma; Patatin-like phospholipase domain-containing protein 8; iPLA



Molecular
Weight :

88KD

Product Images



Western Blot analysis of various cells using iPLA2y Polyclonal Antibody diluted at 1 : 2000