

## IPMK Polyclonal Antibody

Catalog_no :	AT2384
Applications :	WB,IHC-p,ELISA
Reactivity :	Human,Mouse,Rat,Monkey
Category :	抗原抗体
Size :	100µg/50µg/20µg
Gene_name :	IPMK
Protein_name :	Inositol polyphosphate multikinase
Humangene_id :	<a href="#">253430</a>
Humanswissprot_no :	<a href="#">Q8NFU5</a>
Mousegene_id :	<a href="#">69718</a>
Mouseswissprot_no :	<a href="#">Q7TT16</a>
Ratgene_id :	<a href="#">171458</a>
Ratswissprot_no :	<a href="#">Q99NI4</a>
Immunogen :	The antiserum was produced against synthesized peptide derived from human IPMK. AA range:311-360
Specificity :	IPMK Polyclonal Antibody detects endogenous levels of IPMK protein.
Formulation :	Liquid in PBS containing 50% glycerol, 0.5% BSA and 0.02% sodium azide.
Source :	Rabbit
Dilution :	Western Blot: 1/500 - 1/2000. Immunohistochemistry: 1/100 - 1/300. ELISA: 1/40000. Not yet tested in other applications.
Purification :	The antibody was affinity-purified from rabbit antiserum by affinity-chromatography using epitope-specific immunogen.
Concentration :	1 mg/ml
Storage_stability :	-20°C/1 year
Msds :	MSDS_Antibody.pdf



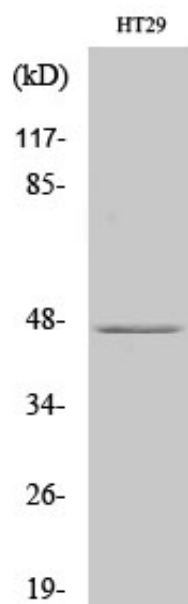
Other\_name : IPMK; IMPK; Inositol polyphosphate multikinase; Inositol 1; 3,4,6-tetrakisphosphate 5-kinase

---

Molecular Weight : 47KD

---

## Product Images



Western Blot analysis of various cells using IPMK Polyclonal Antibody cells nucleus extracted by Minute TM Cytoplasmic and Nuclear Fractionation kit (SC-003, Inventbiotech, MN, USA).