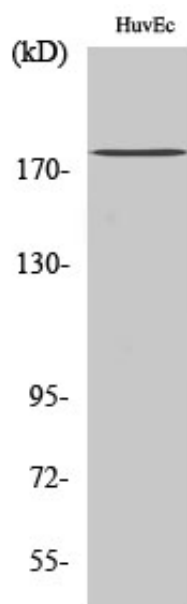


## IQGAP3 Polyclonal Antibody

Catalog_no :	AT2388
Applications :	WB,ELISA
Reactivity :	Human,Mouse,Rat
Category :	抗原抗体
Size :	100µg/50µg/20µg
Gene_name :	IQGAP3
Protein_name :	Ras GTPase-activating-like protein IQGAP3
Humangene_id :	<a href="#">128239</a>
Humanswissprot_no :	<a href="#">Q86VI3</a>
Immunogen :	The antiserum was produced against synthesized peptide derived from human IQGAP3. AA range:107-156
Specificity :	IQGAP3 Polyclonal Antibody detects endogenous levels of IQGAP3 protein.
Formulation :	Liquid in PBS containing 50% glycerol, 0.5% BSA and 0.02% sodium azide.
Source :	Rabbit
Dilution :	Western Blot: 1/500 - 1/2000. ELISA: 1/5000. Not yet tested in other applications.
Purification :	The antibody was affinity-purified from rabbit antiserum by affinity-chromatography using epitope-specific immunogen.
Concentration :	1 mg/ml
Storage_stability :	-20°C/1 year
Msds :	MSDS_Antibody.pdf
Other_name :	IQGAP3; Ras GTPase-activating-like protein IQGAP3
Molecular Weight :	180KD

## Product Images



Western Blot analysis of various cells using IQGAP3 Polyclonal Antibody diluted at 1 : 1000