



IRF-3 Polyclonal Antibody

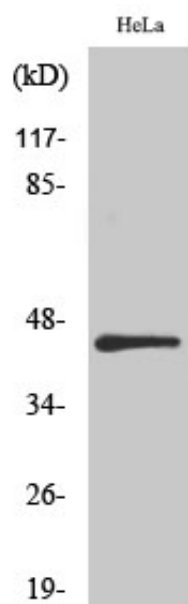
Catalog_no :	AT2398
Applications :	WB,IHC-p,ELISA
Reactivity :	Human,Mouse,Rat
Category :	抗原抗体
Size :	100µg/50µg/20µg
Gene_name :	IRF3
Protein_name :	Interferon regulatory factor 3
Humangene_id :	3661
Humanswissprot_no :	Q14653
Mousegene_id :	54131
Mouseswissprot_no :	P70671
Immunogen :	The antiserum was produced against synthesized peptide derived from human IRF3. AA range:362-411
Specificity :	IRF-3 Polyclonal Antibody detects endogenous levels of IRF-3 protein.
Formulation :	Liquid in PBS containing 50% glycerol, 0.5% BSA and 0.02% sodium azide.
Source :	Rabbit
Dilution :	Western Blot: 1/500 - 1/2000. Immunohistochemistry: 1/100 - 1/300. ELISA: 1/5000. Not yet tested in other applications.
Purification :	The antibody was affinity-purified from rabbit antiserum by affinity-chromatography using epitope-specific immunogen.
Concentration :	1 mg/ml
Storage_stability :	-20°C/1 year
Msds :	MSDS_Antibody.pdf
Other_name :	IRF3; Interferon regulatory factor 3; IRF-3
Molecular Weight :	47KD



专注二抗产品

Biodragon旗下品牌

Product Images



Western Blot analysis of various cells using IRF-3
Polyclonal Antibody diluted at 1 : 500