

IRF-4 Polyclonal Antibody

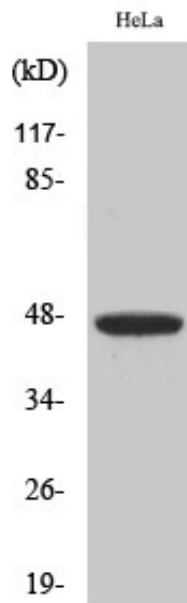
Catalog_no :	<u>AT2399</u>
Applications :	<u>WB,IHC-p,IF,ELISA</u>
Reactivity :	<u>Human,Mouse</u>
Category :	<u>抗原抗体</u>
Size :	<u>100µg/50µg/20µg</u>
Gene_name :	<u>IRF4</u>
Protein_name :	<u>Interferon regulatory factor 4</u>
Humangene_id :	<u>3662</u>
Humanswissprot_no :	<u>Q15306</u>
Mousegene_id :	<u>16364</u>
Mouseswissprot_no :	<u>Q64287</u>
Immunogen :	<u>The antiserum was produced against synthesized peptide derived from human IRF4. AA range:281-330</u>
Specificity :	<u>IRF-4 Polyclonal Antibody detects endogenous levels of IRF-4 protein.</u>
Formulation :	<u>Liquid in PBS containing 50% glycerol, 0.5% BSA and 0.02% sodium azide.</u>
Source :	<u>Rabbit</u>
Dilution :	<u>Western Blot: 1/500 - 1/2000. Immunohistochemistry: 1/100 - 1/300. Immunofluorescence: 1/200 - 1/1000. ELISA: 1/20000. Not yet tested in other applications.</u>
Purification :	<u>The antibody was affinity-purified from rabbit antiserum by affinity-chromatography using epitope-specific immunogen.</u>
Concentration :	<u>1 mg/ml</u>
Storage_stability :	<u>-20°C/1 year</u>
Msds :	<u>MSDS_Antibody.pdf</u>
Other_name :	<u>IRF4; MUM1; Interferon regulatory factor 4; IRF-4; Lymphocyte-specific interferon regulatory factor; LSIRF; Multiple myeloma oncogene 1; NF-EM5</u>



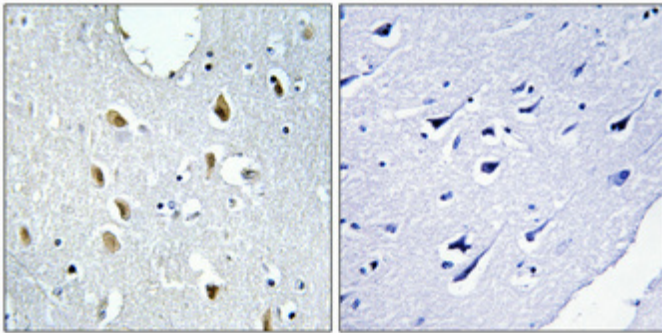
Molecular
Weight :

45KD

Product Images



Western Blot analysis of various cells using IRF-4 Polyclonal Antibody



Immunohistochemical analysis of paraffin-embedded Human brain. Antibody was diluted at 1:100(4°,overnight). High-pressure and temperature Tris-EDTA,pH8.0 was used for antigen retrieval. Negative contrl (right) obtaned from antibody was pre-absorbed by immunogen peptide.