

## Islet-2 Polyclonal Antibody

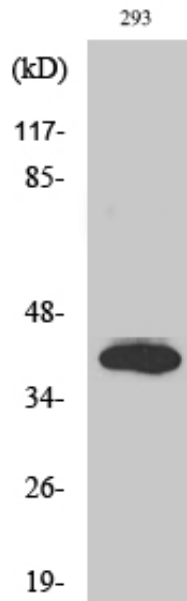
Catalog_no :	AT2415
Applications :	WB,IF,ELISA
Reactivity :	Human,Mouse,Rat
Category :	抗原抗体
Size :	100µg/50µg/20µg
Gene_name :	ISL2
Protein_name :	Insulin gene enhancer protein ISL-2
Humangene_id :	<a href="#">64843</a>
Humanswissprot_no :	<a href="#">Q96A47</a>
Mousegene_id :	<a href="#">104360</a>
Mouseswissprot_no :	<a href="#">Q9CXV0</a>
Ratgene_id :	<a href="#">57233</a>
Ratswissprot_no :	<a href="#">P50480</a>
Immunogen :	The antiserum was produced against synthesized peptide derived from human ISL2. AA range:161-210
Specificity :	Islet-2 Polyclonal Antibody detects endogenous levels of Islet-2 protein.
Formulation :	Liquid in PBS containing 50% glycerol, 0.5% BSA and 0.02% sodium azide.
Source :	Rabbit
Dilution :	Western Blot: 1/500 - 1/2000. Immunofluorescence: 1/200 - 1/1000. ELISA: 1/20000. Not yet tested in other applications.
Purification :	The antibody was affinity-purified from rabbit antiserum by affinity-chromatography using epitope-specific immunogen.
Concentration :	1 mg/ml
Storage_stability :	-20°C/1 year
Msds :	MSDS_Antibody.pdf



Other\_name : ISL2; Insulin gene enhancer protein ISL-2; Islet-2

Molecular Weight : 40KD

## Product Images



Western Blot analysis of various cells using Islet-2 Polyclonal Antibody diluted at 1 : 500 cells nucleus extracted by Minute TM Cytoplasmic and Nuclear Fractionation kit (SC-003, Inventbiotech, MN, USA).