

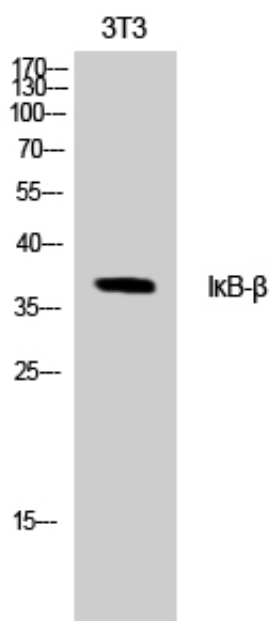
I κ B- β Polyclonal Antibody

Catalog_no :	AT2421
Applications :	WB,ELISA
Reactivity :	Human,Mouse
Category :	抗原抗体
Size :	100 μ g/50 μ g/20 μ g
Gene_name :	NFKBIB
Protein_name :	NF-kappa-B inhibitor beta
Humangene_id :	4793
Humanswissprot_no :	Q15653
Mousegene_id :	18036
Mouseswissprot_no :	Q60778
Immunogen :	The antiserum was produced against synthesized peptide derived from human IkappaB-beta. AA range:4-53
Specificity :	I κ B- β Polyclonal Antibody detects endogenous levels of I κ B- β protein.
Formulation :	Liquid in PBS containing 50% glycerol, 0.5% BSA and 0.02% sodium azide.
Source :	Rabbit
Dilution :	Western Blot: 1/500 - 1/2000. ELISA: 1/5000. Not yet tested in other applications.
Purification :	The antibody was affinity-purified from rabbit antiserum by affinity-chromatography using epitope-specific immunogen.
Concentration :	1 mg/ml
Storage_stability :	-20°C/1 year
Msds :	MSDS_Antibody.pdf
Other_name :	NFKBIB; IKBB; TRIP9; NF-kappa-B inhibitor beta; NF-kappa-BIB; I-kappa-B-beta; IkB-B; IkB-beta; IkappaBbeta; Thyroid receptor-interacting protein 9; TR-interacting protein 9; TRIP-9
Molecular	37KD



Weight :

Product Images



Western Blot analysis of NIH-3T3 cells using IκB-β Polyclonal Antibody