

I κ B- ϵ Polyclonal Antibody

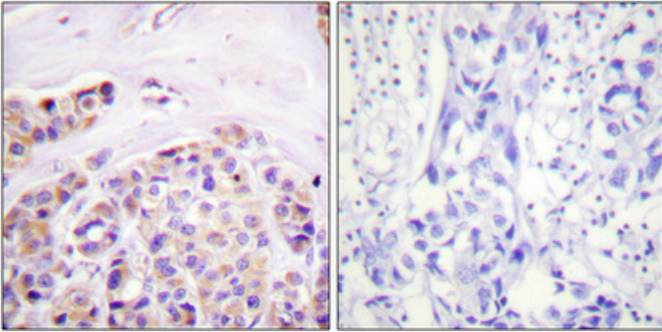
Catalog_no :	AT2422
Applications :	WB,IHC-p,IF,ELISA
Reactivity :	Human,Mouse,Rat
Category :	抗原抗体
Size :	100 μ g/50 μ g/20 μ g
Gene_name :	NFKBIE
Protein_name :	NF-kappa-B inhibitor epsilon
Humangene_id :	4794
Humanswissprot_no :	O00221
Mousegene_id :	18037
Mouseswissprot_no :	O54910
Immunogen :	The antiserum was produced against synthesized peptide derived from human IkappaB-epsilon. AA range:131-180
Specificity :	I κ B- ϵ Polyclonal Antibody detects endogenous levels of I κ B- ϵ protein.
Formulation :	Liquid in PBS containing 50% glycerol, 0.5% BSA and 0.02% sodium azide.
Source :	Rabbit
Dilution :	Western Blot: 1/500 - 1/2000. Immunohistochemistry: 1/100 - 1/300. Immunofluorescence: 1/200 - 1/1000. ELISA: 1/40000. Not yet tested in other applications.
Purification :	The antibody was affinity-purified from rabbit antiserum by affinity-chromatography using epitope-specific immunogen.
Concentration :	1 mg/ml
Storage_stability :	-20°C/1 year
Msds :	MSDS_Antibody.pdf
Other_name :	NFKBIE; IKBE; NF-kappa-B inhibitor epsilon; NF-kappa-BIE; I-kappa-B-epsilon; I κ B-E; I κ B-epsilon; IkappaBepsilon



Molecular
Weight :

45KD

Product Images



Immunohistochemical analysis of paraffin-embedded Human breast cancer. Antibody was diluted at 1:100(4°,overnight). High-pressure and temperature Tris-EDTA,pH8.0 was used for antigen retrieval. Negative contrl (right) obtaned from antibody was pre-absorbed by immunogen peptide.