

## JAB1 Polyclonal Antibody

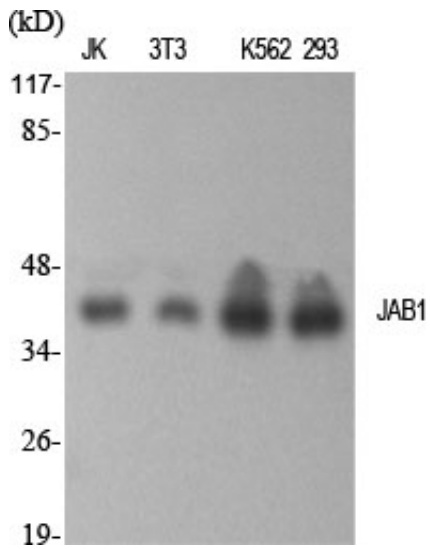
Catalog_no :	AT2423
Applications :	WB,IHC-p,ELISA
Reactivity :	Human,Mouse
Category :	抗原抗体
Size :	100µg/50µg/20µg
Gene_name :	COPS5
Protein_name :	COP9 signalosome complex subunit 5
Humangene_id :	<a href="#">10987</a>
Humanswissprot_no :	<a href="#">Q92905</a>
Mousegene_id :	<a href="#">26754</a>
Mouseswissprot_no :	<a href="#">O35864</a>
Immunogen :	The antiserum was produced against synthesized peptide derived from human COPS5. AA range:161-210
Specificity :	JAB1 Polyclonal Antibody detects endogenous levels of JAB1 protein.
Formulation :	Liquid in PBS containing 50% glycerol, 0.5% BSA and 0.02% sodium azide.
Source :	Rabbit
Dilution :	Western Blot: 1/500 - 1/2000. Immunohistochemistry: 1/100 - 1/300. ELISA: 1/5000. Not yet tested in other applications.
Purification :	The antibody was affinity-purified from rabbit antiserum by affinity-chromatography using epitope-specific immunogen.
Concentration :	1 mg/ml
Storage_stability :	-20°C/1 year
Msds :	<a href="#">MSDS_Antibody.pdf</a>
Other_name :	COPS5; CSN5; JAB1; COP9 signalosome complex subunit 5; SGN5; Signalosome subunit 5; Jun activation domain-binding protein 1
Molecular	38KD



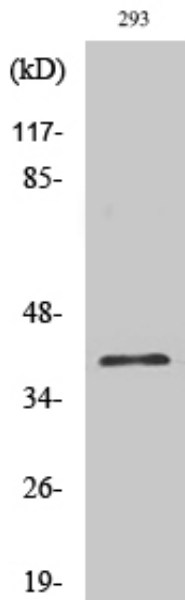
Weight :

---

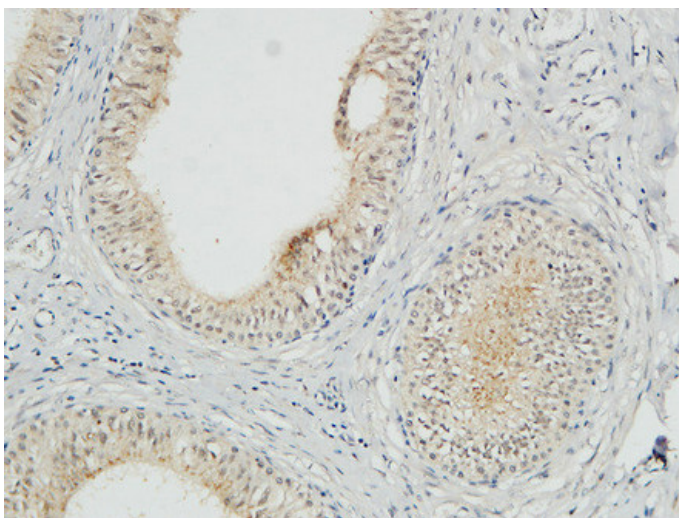
## Product Images



Western Blot analysis of various cells using JAB1 Polyclonal Antibody

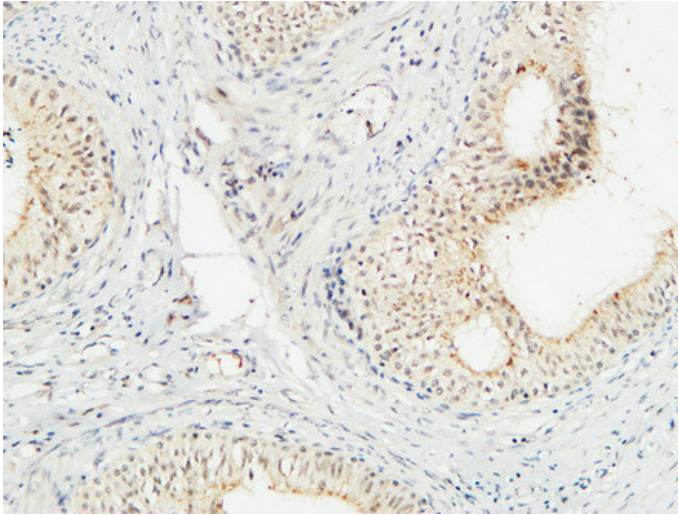


Western Blot analysis of K562 cells using JAB1 Polyclonal Antibody

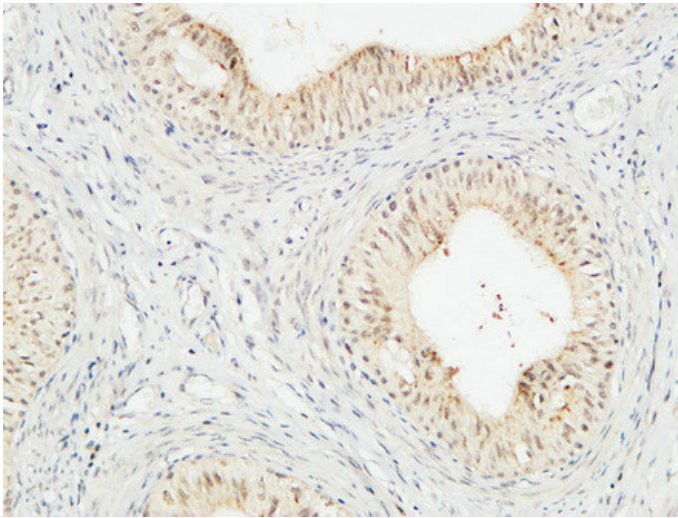


Immunohistochemical analysis of paraffin-embedded Human testis. 1, Antibody was diluted at 1:100(4°, overnight). 2, High-pressure and temperature EDTA, pH8.0 was used for antigen retrieval. 3, Secondary antibody was diluted at 1:200(room temperature, 30min).

Immunohistochemical analysis of paraffin-embedded



Human testis. 1, Antibody was diluted at 1:100(4°,overnight). 2, High-pressure and temperature EDTA, pH8.0 was used for antigen retrieval. 3,Secondary antibody was diluted at 1:200(room temperature, 30min).



Immunohistochemical analysis of paraffin-embedded Human testis. 1, Antibody was diluted at 1:100(4°,overnight). 2, High-pressure and temperature EDTA, pH8.0 was used for antigen retrieval. 3,Secondary antibody was diluted at 1:200(room temperature, 30min).