

JAK2 Polyclonal Antibody

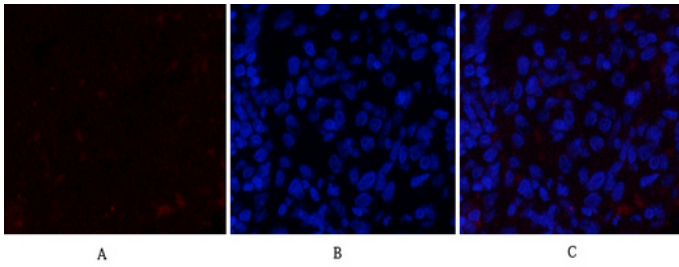
Catalog_no :	AT2426
Applications :	IF,WB,IHC-p,ELISA
Reactivity :	Human,Mouse,Rat
Category :	抗原抗体
Size :	100µg/50µg/20µg
Gene_name :	JAK2
Protein_name :	Tyrosine-protein kinase JAK2
Humangene_id :	3717
Humanswissprot_no :	O60674
Mousegene_id :	16452
Mouseswissprot_no :	Q62120
Ratgene_id :	24514
Ratswissprot_no :	Q62689
Immunogen :	The antiserum was produced against synthesized peptide derived from human JAK2. AA range:981-1030
Specificity :	JAK2 Polyclonal Antibody detects endogenous levels of JAK2 protein.
Formulation :	Liquid in PBS containing 50% glycerol, 0.5% BSA and 0.02% sodium azide.
Source :	Rabbit
Dilution :	IF: 1:50-200 Western Blot: 1/500 - 1/2000. Immunohistochemistry: 1/100 - 1/300. ELISA: 1/10000. Not yet tested in other applications.
Purification :	The antibody was affinity-purified from rabbit antiserum by affinity-chromatography using epitope-specific immunogen.
Concentration :	1 mg/ml
Storage_stability :	-20°C/1 year
Msds :	MSDS_Antibody.pdf



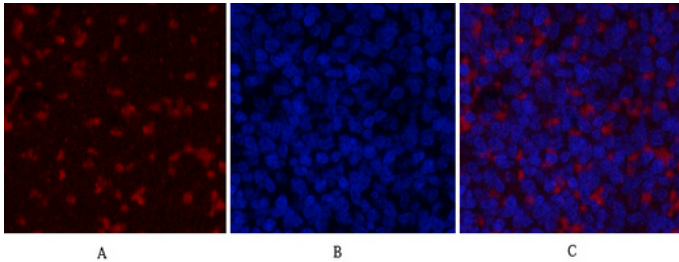
Other_name : JAK2; Tyrosine-protein kinase JAK2; Janus kinase 2; JAK-2

Molecular Weight : 130KD

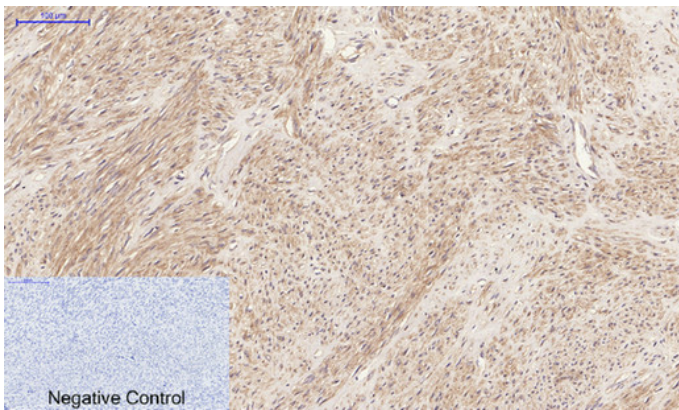
Product Images



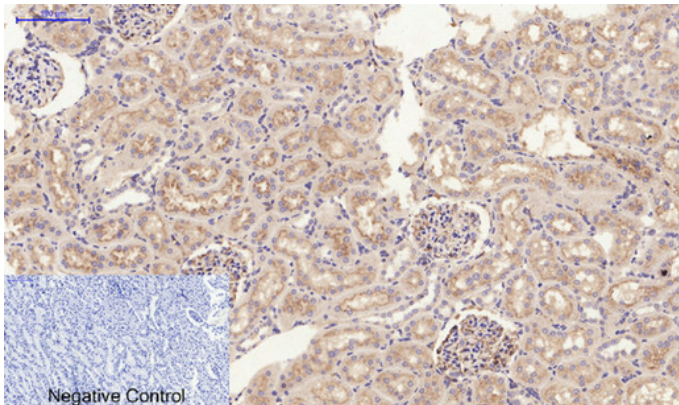
Immunofluorescence analysis of rat-lung tissue. 1, JAK2 Polyclonal Antibody (red) was diluted at 1:200 (4°C, overnight). 2, Cy3 labeled Secondary antibody was diluted at 1:300 (room temperature, 50 min). 3, Picture B: DAPI (blue) 10 min. Picture A: Target. Picture B: DAPI. Picture C: merge of A+B



Immunofluorescence analysis of rat-spleen tissue. 1, JAK2 Polyclonal Antibody (red) was diluted at 1:200 (4°C, overnight). 2, Cy3 labeled Secondary antibody was diluted at 1:300 (room temperature, 50 min). 3, Picture B: DAPI (blue) 10 min. Picture A: Target. Picture B: DAPI. Picture C: merge of A+B

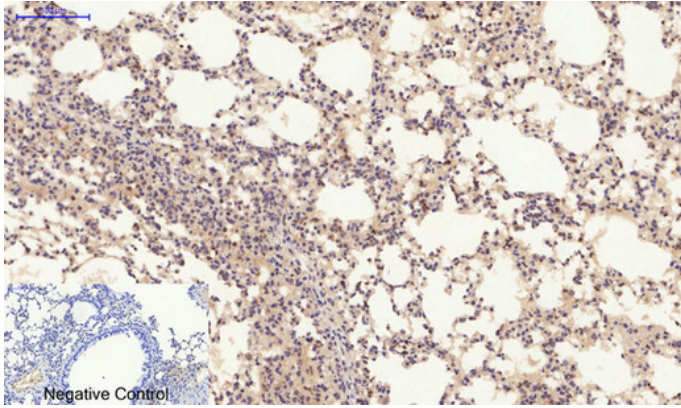


Immunohistochemical analysis of paraffin-embedded Human-uterus tissue. 1, JAK2 Polyclonal Antibody was diluted at 1:200 (4°C, overnight). 2, Sodium citrate pH 6.0 was used for antibody retrieval (>98°C, 20 min). 3, Secondary antibody was diluted at 1:200 (room temperature, 30 min). Negative control was used by secondary antibody only.



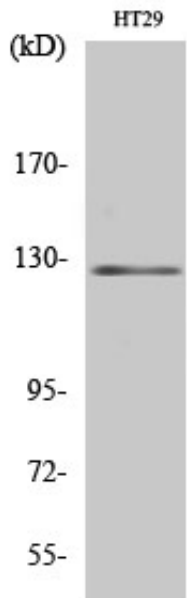
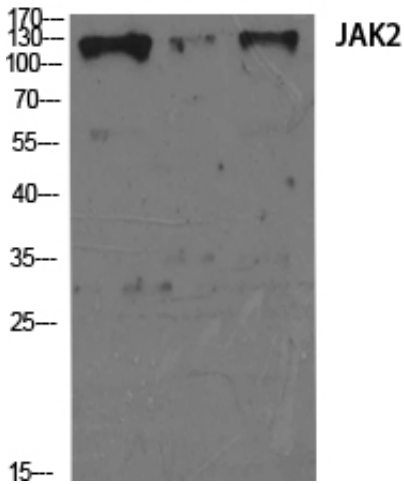
Immunohistochemical analysis of paraffin-embedded Rat-kidney tissue. 1, JAK2 Polyclonal Antibody was diluted at 1:200 (4°C, overnight). 2, Sodium citrate pH 6.0 was used for antibody retrieval (>98°C, 20 min). 3, Secondary antibody was diluted at 1:200 (room temperature, 30 min). Negative control was used by secondary antibody only.

Immunohistochemical analysis of paraffin-embedded Mouse-lung tissue. 1, JAK2 Polyclonal Antibody was diluted at 1:200 (4°C, overnight). 2, Sodium citrate pH 6.0 was used for antibody retrieval (>98°C, 20 min). 3, Secondary antibody was diluted at 1:200 (room temperature, 30 min). Negative control was used by secondary antibody only.



PC-3 KB 3T3

Western Blot analysis of various cells using JAK2 Polyclonal Antibody diluted at 1 : 2000



Western Blot analysis of HT29 cells using JAK2 Polyclonal Antibody diluted at 1 : 2000