

JDP2 Polyclonal Antibody

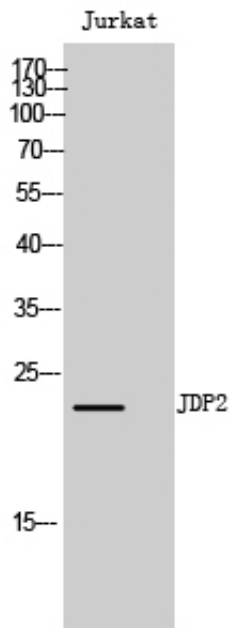
Catalog_no :	AT2432
Applications :	WB,ELISA
Reactivity :	Human,Mouse,Rat
Category :	抗原抗体
Size :	100µg/50µg/20µg
Gene_name :	JDP2
Protein_name :	Jun dimerization protein 2
Humangene_id :	122953
Humanswissprot_no :	Q8WYK2
Mousegene_id :	81703
Mouseswissprot_no :	P97875
Ratgene_id :	116674
Ratswissprot_no :	Q78E65
Immunogen :	The antiserum was produced against synthesized peptide derived from human JDP2. AA range:114-163
Specificity :	JDP2 Polyclonal Antibody detects endogenous levels of JDP2 protein.
Formulation :	Liquid in PBS containing 50% glycerol, 0.5% BSA and 0.02% sodium azide.
Source :	Rabbit
Dilution :	Western Blot: 1/500 - 1/2000. ELISA: 1/10000. Not yet tested in other applications.
Purification :	The antibody was affinity-purified from rabbit antiserum by affinity-chromatography using epitope-specific immunogen.
Concentration :	1 mg/ml
Storage_stability :	-20°C/1 year
Msds :	MSDS_Antibody.pdf



Other_name : JDP2; Jun dimerization protein 2

Molecular Weight : 22KD

Product Images



Western Blot analysis of Jurkat cells using JDP2 Polyclonal Antibody