



JIK Polyclonal Antibody

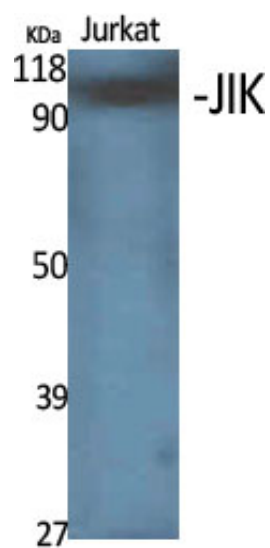
| | |
|---------------------|---|
| Catalog_no : | AT2433 |
| Applications : | WB,ELISA |
| Reactivity : | Human,Mouse,Rat |
| Category : | 抗原抗体 |
| Size : | 100µg/50µg/20µg |
| Gene_name : | TAOK3 |
| Protein_name : | Serine/threonine-protein kinase TAO3 |
| Humangene_id : | 51347 |
| Humanswissprot_no : | Q9H2K8 |
| Mousegene_id : | 330177 |
| Mouseswissprot_no : | Q8BYC6 |
| Ratgene_id : | 304530 |
| Ratswissprot_no : | Q53UA7 |
| Immunogen : | The antiserum was produced against synthesized peptide derived from human TAOK3. AA range:531-580 |
| Specificity : | JIK Polyclonal Antibody detects endogenous levels of JIK protein. |
| Formulation : | Liquid in PBS containing 50% glycerol, 0.5% BSA and 0.02% sodium azide. |
| Source : | Rabbit |
| Dilution : | Western Blot: 1/500 - 1/2000. ELISA: 1/10000. Not yet tested in other applications. |
| Purification : | The antibody was affinity-purified from rabbit antiserum by affinity-chromatography using epitope-specific immunogen. |
| Concentration : | 1 mg/ml |
| Storage_stability : | -20°C/1 year |
| Msds : | MSDS_Antibody.pdf |



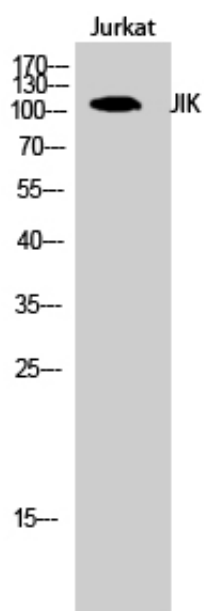
Other_name : TAOK3; DPK; JIK; KDS; MAP3K18; Serine/threonine-protein kinase TAO3; Cutaneous T-cell lymphoma-associated antigen HD-CL-09; CTCL-associated antigen HD-CL-09; Dendritic cell-derived protein kinase; JNK/SAPK-inhibitory kinase; Jun kinase-inhi

Molecular Weight : 110KD

Product Images



Western Blot analysis of various cells using JIK Polyclonal Antibody



Western Blot analysis of Jurkat cells using JIK Polyclonal Antibody