

JIP-1 Polyclonal Antibody

Catalog_no :	AT2434
Applications :	WB,IHC-p,IF,ELISA
Reactivity :	Human,Mouse,Rat
Category :	抗原抗体
Size :	100µg/50µg/20µg
Gene_name :	MAPK8IP1
Protein_name :	C-Jun-amino-terminal kinase-interacting protein 1
Humangene_id	9479
:	
Humanswissprot	Q9UQF2
_no :	
Mousegene_id :	19099
Mouseswissprot	Q9WV19
_no :	
Ratgene_id :	116457
Ratswissprot_no	Q9R237
:	
Immunogen :	The antiserum was produced against synthesized peptide derived from human JIP1. AA range:69-118
Specificity :	JIP-1 Polyclonal Antibody detects endogenous levels of JIP-1 protein.
Formulation :	Liquid in PBS containing 50% glycerol, 0.5% BSA and 0.02% sodium azide.
Source :	Rabbit
Dilution :	Western Blot: 1/500 - 1/2000. Immunohistochemistry: 1/100 - 1/300. Immunofluorescence: 1/200 - 1/1000. ELISA: 1/5000. Not yet tested in other applications.
Purification :	The antibody was affinity-purified from rabbit antiserum by affinity-chromatography using epitope-specific immunogen.
Concentration :	1 mg/ml
Storage_stability	-20°C/1 year
:	

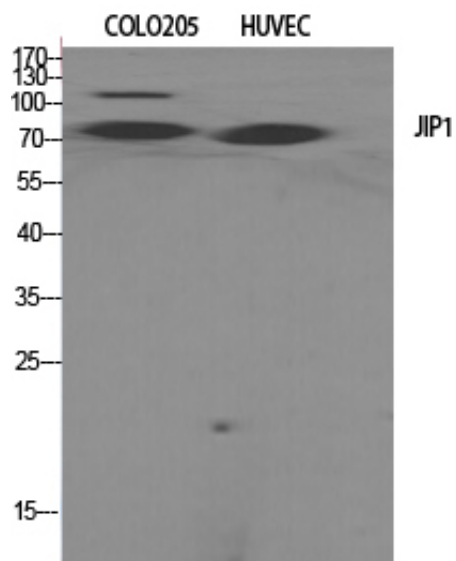


MsdS : [MSDS_Antibody.pdf](#)

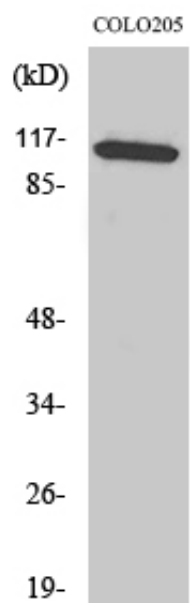
Other_name : MAPK8IP1; IB1; JIP1; PRKM8IP; C-Jun-amino-terminal kinase-interacting protein 1; JIP-1; JNK-interacting protein 1; Islet-brain 1; IB-1; JNK MAP kinase scaffold protein 1; Mitogen-activated protein kinase 8-interacting protein 1

Molecular Weight : 113KD

Product Images



Western Blot analysis of various cells using JIP-1 Polyclonal Antibody



Western Blot analysis of COLO205 cells using JIP-1 Polyclonal Antibody