



JIP-3 Polyclonal Antibody

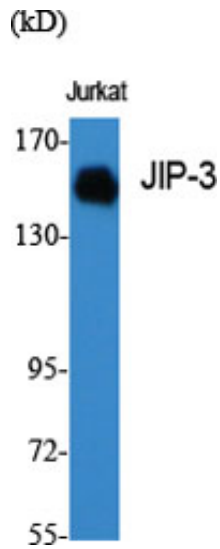
Catalog_no :	AT2436
Applications :	WB,IHC-p,IF,ELISA
Reactivity :	Human,Mouse
Category :	抗原抗体
Size :	100µg/50µg/20µg
Gene_name :	MAPK8IP3
Protein_name :	C-Jun-amino-terminal kinase-interacting protein 3
Humangene_id :	23162
Humanswissprot_no :	Q9UPT6
Mousegene_id :	30957
Mouseswissprot_no :	Q9ESN9
Immunogen :	The antiserum was produced against synthesized peptide derived from human JIP3. AA range:621-670
Specificity :	JIP-3 Polyclonal Antibody detects endogenous levels of JIP-3 protein.
Formulation :	Liquid in PBS containing 50% glycerol, 0.5% BSA and 0.02% sodium azide.
Source :	Rabbit
Dilution :	Western Blot: 1/500 - 1/2000. Immunohistochemistry: 1/100 - 1/300. Immunofluorescence: 1/200 - 1/1000. ELISA: 1/20000. Not yet tested in other applications.
Purification :	The antibody was affinity-purified from rabbit antiserum by affinity-chromatography using epitope-specific immunogen.
Concentration :	1 mg/ml
Storage_stability :	-20°C/1 year
Msds :	MSDS_Antibody.pdf
Other_name :	MAPK8IP3; JIP3; KIAA1066; C-Jun-amino-terminal kinase-interacting protein 3; JIP-3; JNK-interacting protein 3; JNK MAP kinase scaffold protein 3; Mitogen-activated protein kinase 8-interacting protein 3



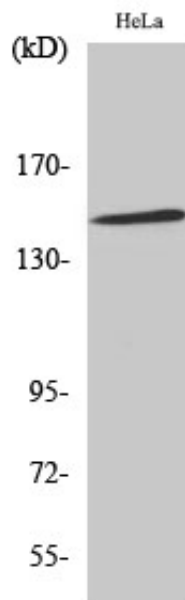
Molecular
Weight :

147KD

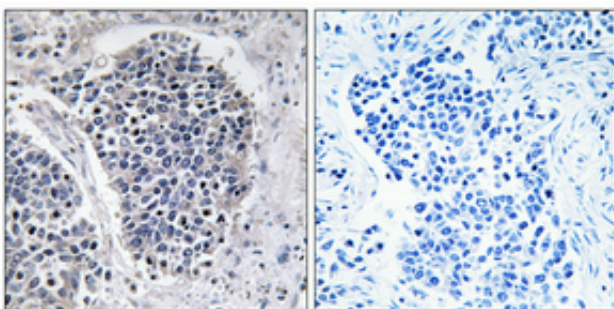
Product Images



Western Blot analysis of various cells using JIP-3 Polyclonal Antibody diluted at 1 : 1000



Western Blot analysis of HeLa cells using JIP-3 Polyclonal Antibody diluted at 1 : 1000



Immunohistochemical analysis of paraffin-embedded Human lung cancer. Antibody was diluted at 1:100(4°, overnight). High-pressure and temperature Tris-EDTA, pH8.0 was used for antigen retrieval. Negative control (right) obtained from antibody was pre-absorbed by immunogen peptide.