



JNK1/2/3 Polyclonal Antibody

Catalog_no :	<u>AT2440</u>
Applications :	<u>WB,IHC-p,IF,ELISA</u>
Reactivity :	<u>Human,Mouse,Rat,Chicken(testedbyyourcustomer)</u>
Category :	<u>抗原抗体</u>
Size :	<u>100µg/50µg/20µg</u>
Gene_name :	<u>MAPK8/9/10</u>
Protein_name :	<u>Mitogen-activated protein kinase 8/9/10</u>
Humangene_id :	<u>5599/5601/5602</u>
Humanswissprot_no :	<u>P45983/P45984/P53779</u>
Mousegene_id :	<u>26419/26420</u>
Ratgene_id :	<u>116554/50658/25272</u>
Ratswissprot_no :	<u>P49185/P49186/P49187</u>
Immunogen :	<u>The antiserum was produced against synthesized peptide derived from human SAPK/JNK. AA range:166-215</u>
Specificity :	<u>JNK1/2/3 Polyclonal Antibody detects endogenous levels of JNK1/2/3 protein.</u>
Formulation :	<u>Liquid in PBS containing 50% glycerol, 0.5% BSA and 0.02% sodium azide.</u>
Source :	<u>Rabbit</u>
Dilution :	<u>Western Blot: 1/500 - 1/2000. Immunohistochemistry: 1/100 - 1/300. Immunofluorescence: 1/200 - 1/1000. ELISA: 1/10000. Not yet tested in other applications.</u>
Purification :	<u>The antibody was affinity-purified from rabbit antiserum by affinity-chromatography using epitope-specific immunogen.</u>
Concentration :	<u>1 mg/ml</u>
Storage_stability :	<u>-20°C/1 year</u>
Msds :	<u>MSDS_Antibody.pdf</u>
Other_name :	<u>MAPK8; JNK1; PRKM8; SAPK1; SAPK1C; Mitogen-activated protein kinase 8; MAP kinase 8;</u>

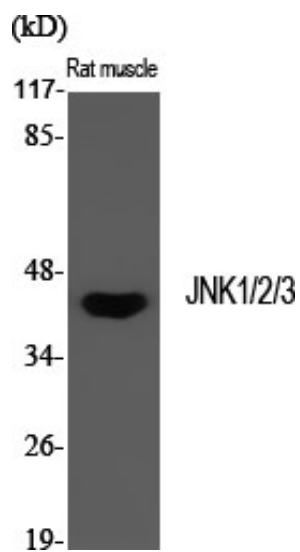


MAPK 8; JNK-46; Stress-activated protein kinase 1c; SAPK1c; Stress-activated protein kinase JNK1; c-Jun N-terminal kinase 1; MAPK9; JNK2; PRKM9; SAPK1A; Mi

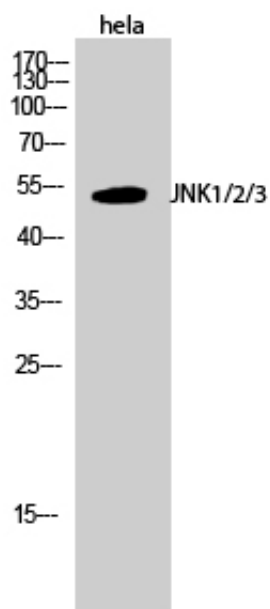
Molecular Weight :

44KD

Product Images



Western Blot analysis of various cells using JNK1/2/3
Polyclonal Antibody diluted at 1 : 1000



Western Blot analysis of hela cells using JNK1/2/3
Polyclonal Antibody diluted at 1 : 1000