

## JNK2 Polyclonal Antibody

Catalog_no :	AT2442
Applications :	WB,IHC-p,ELISA
Reactivity :	Human,Mouse,Rat
Category :	抗原抗体
Size :	100µg/50µg/20µg
Gene_name :	MAPK9
Protein_name :	Mitogen-activated protein kinase 9
Humangene_id :	<a href="#">5601</a>
Humanswissprot_no :	<a href="#">P45984</a>
Mousegene_id :	<a href="#">26420</a>
Mouseswissprot_no :	<a href="#">Q9WTU6</a>
Ratgene_id :	<a href="#">50658</a>
Ratswissprot_no :	<a href="#">P49186</a>
Immunogen :	The antiserum was produced against synthesized peptide derived from human MAPK9. AA range:246-295
Specificity :	JNK2 Polyclonal Antibody detects endogenous levels of JNK2 protein.
Formulation :	Liquid in PBS containing 50% glycerol, 0.5% BSA and 0.02% sodium azide.
Source :	Rabbit
Dilution :	Western Blot: 1/500 - 1/2000. Immunohistochemistry: 1/100 - 1/300. ELISA: 1/10000. Not yet tested in other applications.
Purification :	The antibody was affinity-purified from rabbit antiserum by affinity-chromatography using epitope-specific immunogen.
Concentration :	1 mg/ml
Storage_stability :	-20°C/1 year
Msds :	MSDS_Antibody.pdf



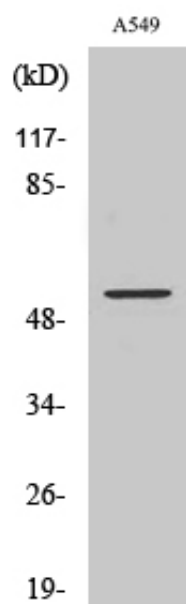
Other\_name : MAPK9; JNK2; PRKM9; SAPK1A; Mitogen-activated protein kinase 9; MAP kinase 9; MAPK 9; JNK-55; Stress-activated protein kinase 1a; SAPK1a; Stress-activated protein kinase JNK2; c-Jun N-terminal kinase 2

---

Molecular Weight : 48KD

---

## Product Images



Western Blot analysis of various cells using JNK2 Polyclonal Antibody