

JNK3 Polyclonal Antibody

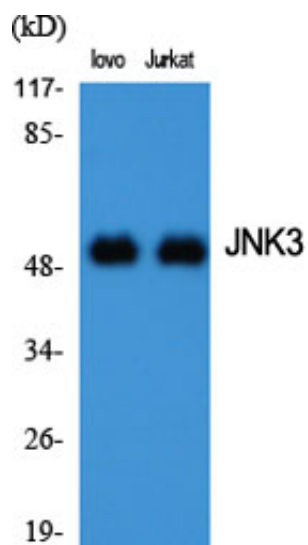
Catalog_no :	AT2443
Applications :	WB,IHC-p,IF,ELISA
Reactivity :	Human,Mouse,Rat
Category :	抗原抗体
Size :	100µg/50µg/20µg
Gene_name :	MAPK10
Protein_name :	Mitogen-activated protein kinase 10
Humangene_id	5602
:	
Humanswissprot	P53779
_no :	
Mouseswissprot	Q61831
_no :	
Ratgene_id :	25272
Ratswissprot_no	P49187
:	
Immunogen :	The antiserum was produced against synthesized peptide derived from human MAPK10. AA range:361-410
Specificity :	JNK3 Polyclonal Antibody detects endogenous levels of JNK3 protein.
Formulation :	Liquid in PBS containing 50% glycerol, 0.5% BSA and 0.02% sodium azide.
Source :	Rabbit
Dilution :	Western Blot: 1/500 - 1/2000. Immunohistochemistry: 1/100 - 1/300. Immunofluorescence: 1/200 - 1/1000. ELISA: 1/20000. Not yet tested in other applications.
Purification :	The antibody was affinity-purified from rabbit antiserum by affinity-chromatography using epitope-specific immunogen.
Concentration :	1 mg/ml
Storage_stability	-20°C/1 year
:	
Msds :	MSDS_Antibody.pdf



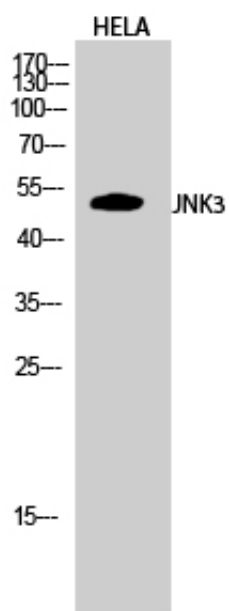
Other_name : MAPK10; JNK3; JNK3A; PRKM10; SAPK1B; Mitogen-activated protein kinase 10; MAP kinase 10; MAPK 10; MAP kinase p49 3F12; Stress-activated protein kinase 1b; SAPK1b; Stress-activated protein kinase JNK3; c-Jun N-terminal kinase 3

Molecular Weight : 48KD

Product Images



Western Blot analysis of various cells using JNK3
Polyclonal Antibody diluted at 1 : 2000



Western Blot analysis of HELA cells using JNK3
Polyclonal Antibody diluted at 1 : 2000