

## Jun B Polyclonal Antibody

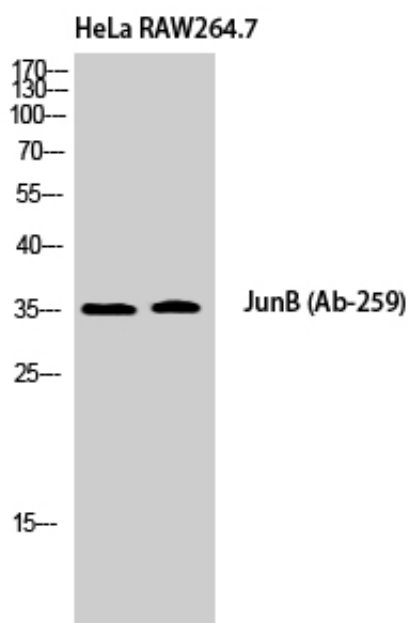
Catalog_no :	AT2445
Applications :	WB,IHC-p,IP,ELISA
Reactivity :	Human,Mouse
Category :	抗原抗体
Size :	100µg/50µg/20µg
Gene_name :	JUNB
Protein_name :	Transcription factor jun-B
Humangene_id :	<a href="#">3726</a>
Humanswissprot_no :	<a href="#">P17275</a>
Mousegene_id :	<a href="#">16477</a>
Mouseswissprot_no :	<a href="#">P09450</a>
Immunogen :	The antiserum was produced against synthesized peptide derived from human JunB. AA range:226-275
Specificity :	Jun B Polyclonal Antibody detects endogenous levels of Jun B protein.
Formulation :	Liquid in PBS containing 50% glycerol, 0.5% BSA and 0.02% sodium azide.
Source :	Rabbit
Dilution :	Western Blot: 1/500 - 1/2000. Immunohistochemistry: 1/100 - 1/300. Immunoprecipitation: 2-5 ug/mg lysate. ELISA: 1/20000. Not yet tested in other applications.
Purification :	The antibody was affinity-purified from rabbit antiserum by affinity-chromatography using epitope-specific immunogen.
Concentration :	1 mg/ml
Storage_stability :	-20°C/1 year
Msds :	<a href="#">MSDS_Antibody.pdf</a>
Other_name :	JUNB; Transcription factor jun-B
Molecular	36KD



Weight :

---

## Product Images



Western Blot analysis of HeLa RAW264.7 cells using Jun B Polyclonal Antibody cells nucleus extracted by Minute TM Cytoplasmic and Nuclear Fractionation kit (SC-003, Inventbiotech, MN, USA).