

Jun D Polyclonal Antibody

Catalog_no :	AT2447
Applications :	WB,IHC-p,IP,ELISA
Reactivity :	Human,Mouse,Rat
Category :	抗原抗体
Size :	100µg/50µg/20µg
Gene_name :	JUND
Protein_name :	Transcription factor jun-D
Humangene_id :	3727
Humanswissprot_no :	P17535
Mousegene_id :	16478
Mouseswissprot_no :	P15066
Ratgene_id :	24518
Ratswissprot_no :	P52909
Immunogen :	The antiserum was produced against synthesized peptide derived from human JunD. AA range:222-271
Specificity :	Jun D Polyclonal Antibody detects endogenous levels of Jun D protein.
Formulation :	Liquid in PBS containing 50% glycerol, 0.5% BSA and 0.02% sodium azide.
Source :	Rabbit
Dilution :	Western Blot: 1/500 - 1/2000. Immunohistochemistry: 1/100 - 1/300. Immunoprecipitation: 2-5 ug/mg lysate. ELISA: 1/20000. Not yet tested in other applications.
Purification :	The antibody was affinity-purified from rabbit antiserum by affinity-chromatography using epitope-specific immunogen.
Concentration :	1 mg/ml
Storage_stability :	-20°C/1 year

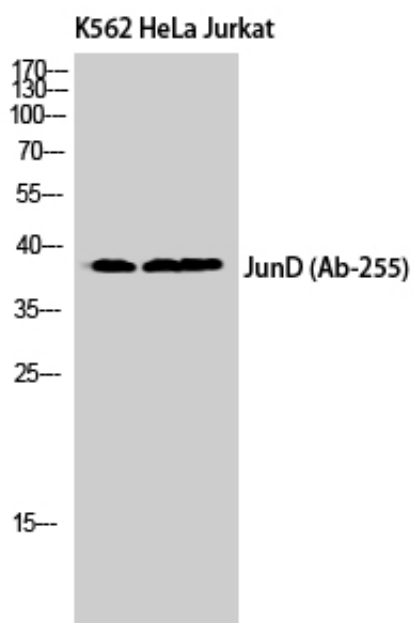


Msd : MSDS_Antibody.pdf

Other_name : JUND; Transcription factor jun-D

Molecular Weight : 38KD

Product Images



Western Blot analysis of K562 HeLa Jurkat cells using Jun D Polyclonal Antibody cells nucleus extracted by Minute TM Cytoplasmic and Nuclear Fractionation kit (SC-003, Inventbiotech, MN, USA).