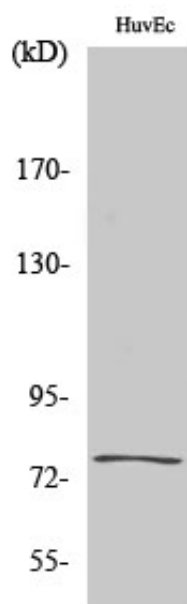


KALIG-1 Polyclonal Antibody

Catalog_no :	AT2448
Applications :	WB,ELISA
Reactivity :	Human
Category :	抗原抗体
Size :	100µg/50µg/20µg
Gene_name :	KAL1
Protein_name :	Anosmin-1
Humangene_id :	3730
Humanswissprot_no :	P23352
Immunogen :	The antiserum was produced against synthesized peptide derived from human KAL1. AA range:151-200
Specificity :	KALIG-1 Polyclonal Antibody detects endogenous levels of KALIG-1 protein.
Formulation :	Liquid in PBS containing 50% glycerol, 0.5% BSA and 0.02% sodium azide.
Source :	Rabbit
Dilution :	Western Blot: 1/500 - 1/2000. ELISA: 1/10000. Not yet tested in other applications.
Purification :	The antibody was affinity-purified from rabbit antiserum by affinity-chromatography using epitope-specific immunogen.
Concentration :	1 mg/ml
Storage_stability :	-20°C/1 year
Msds :	MSDS_Antibody.pdf
Other_name :	KAL1; ADMLX; KAL; KALIG1; Anosmin-1; Adhesion molecule-like X-linked; Kallmann syndrome protein
Molecular Weight :	76KD

Product Images



Western Blot analysis of various cells using KALIG-1 Polyclonal Antibody