

KCNG2 Polyclonal Antibody

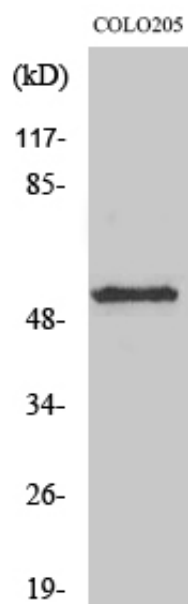
Catalog_no :	AT2454
Applications :	WB,ELISA
Reactivity :	Human,Mouse,Rat
Category :	抗原抗体
Size :	100µg/50µg/20µg
Gene_name :	KCNG2
Protein_name :	Potassium voltage-gated channel subfamily G member 2
Humangene_id :	26251
Humanswissprot_no :	Q9UJ96
Ratgene_id :	307234
Ratswissprot_no :	Q9QYU3
Immunogen :	The antiserum was produced against synthesized peptide derived from human KCNG2. AA range:321-370
Specificity :	KCNG2 Polyclonal Antibody detects endogenous levels of KCNG2 protein.
Formulation :	Liquid in PBS containing 50% glycerol, 0.5% BSA and 0.02% sodium azide.
Source :	Rabbit
Dilution :	Western Blot: 1/500 - 1/2000. ELISA: 1/5000. Not yet tested in other applications.
Purification :	The antibody was affinity-purified from rabbit antiserum by affinity-chromatography using epitope-specific immunogen.
Concentration :	1 mg/ml
Storage_stability :	-20°C/1 year
Msds :	MSDS_Antibody.pdf
Other_name :	KCNG2; KCNF2; Potassium voltage-gated channel subfamily G member 2; Cardiac potassium channel subunit; Voltage-gated potassium channel subunit Kv6.2
Molecular Weight :	51KD



专注二抗产品

Biodragon旗下品牌

Product Images



Western Blot analysis of various cells using KCNG2 Polyclonal Antibody