

KCNG3 Polyclonal Antibody

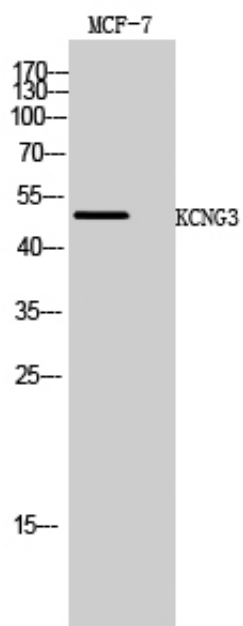
Catalog_no :	AT2455
Applications :	WB,ELISA
Reactivity :	Human,Mouse,Rat
Category :	抗原抗体
Size :	100µg/50µg/20µg
Gene_name :	KCNG3
Protein_name :	Potassium voltage-gated channel subfamily G member 3
Humangene_id :	170850
Humanswissprot_no :	Q8TAE7
Mousegene_id :	225030
Mouseswissprot_no :	P59053
Ratgene_id :	171011
Ratswissprot_no :	Q8R523
Immunogen :	The antiserum was produced against synthesized peptide derived from human KCNG3. AA range:183-232
Specificity :	KCNG3 Polyclonal Antibody detects endogenous levels of KCNG3 protein.
Formulation :	Liquid in PBS containing 50% glycerol, 0.5% BSA and 0.02% sodium azide.
Source :	Rabbit
Dilution :	Western Blot: 1/500 - 1/2000. ELISA: 1/5000. Not yet tested in other applications.
Purification :	The antibody was affinity-purified from rabbit antiserum by affinity-chromatography using epitope-specific immunogen.
Concentration :	1 mg/ml
Storage_stability :	-20°C/1 year
Msds :	MSDS_Antibody.pdf



Other_name : KCNG3; Potassium voltage-gated channel subfamily G member 3; Voltage-gated potassium channel subunit Kv10.1; Voltage-gated potassium channel subunit Kv6.3

Molecular Weight : 50KD

Product Images



Western Blot analysis of MCF-7 cells using KCNG3 Polyclonal Antibody