

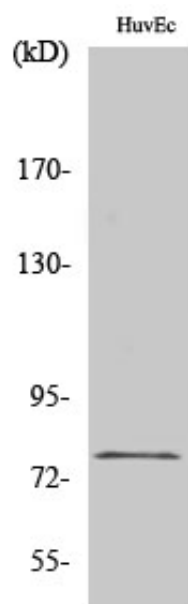
KCNQ4 Polyclonal Antibody

Catalog_no :	AT2459
Applications :	WB,ELISA
Reactivity :	Human,Mouse
Category :	抗原抗体
Size :	100µg/50µg/20µg
Gene_name :	KCNQ4
Protein_name :	Potassium voltage-gated channel subfamily KQT member 4
Humangene_id :	9132
Humanswissprot_no :	P56696
Mousegene_id :	60613
Mouseswissprot_no :	Q9JK97
Immunogen :	The antiserum was produced against synthesized peptide derived from human KCNQ4. AA range:644-693
Specificity :	KCNQ4 Polyclonal Antibody detects endogenous levels of KCNQ4 protein.
Formulation :	Liquid in PBS containing 50% glycerol, 0.5% BSA and 0.02% sodium azide.
Source :	Rabbit
Dilution :	Western Blot: 1/500 - 1/2000. ELISA: 1/5000. Not yet tested in other applications.
Purification :	The antibody was affinity-purified from rabbit antiserum by affinity-chromatography using epitope-specific immunogen.
Concentration :	1 mg/ml
Storage_stability :	-20°C/1 year
Msds :	MSDS_Antibody.pdf
Other_name :	KCNQ4; Potassium voltage-gated channel subfamily KQT member 4; KQT-like 4; Potassium channel subunit alpha KvLQT4; Voltage-gated potassium channel subunit Kv7.4
Molecular	80KD



Weight :

Product Images



Western Blot analysis of various cells using KCNQ4 Polyclonal Antibody