

KDEL Receptor 3 Polyclonal Antibody

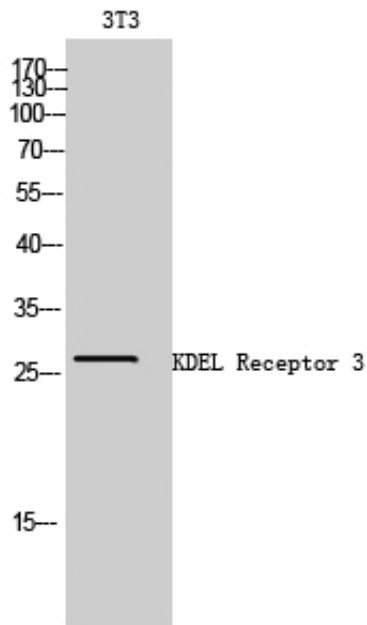
Catalog_no :	AT2463
Applications :	WB,IHC-p,ELISA
Reactivity :	Human,Mouse
Category :	抗原抗体
Size :	100µg/50µg/20µg
Gene_name :	KDEL3
Protein_name :	ER lumen protein retaining receptor 3
Humangene_id :	11015
Humanswissprot_no :	O43731
Mousegene_id :	105785
Mouseswissprot_no :	Q8R1L4
Immunogen :	The antiserum was produced against synthesized peptide derived from human ERD23. AA range:61-110
Specificity :	KDEL Receptor 3 Polyclonal Antibody detects endogenous levels of KDEL Receptor 3 protein.
Formulation :	Liquid in PBS containing 50% glycerol, 0.5% BSA and 0.02% sodium azide.
Source :	Rabbit
Dilution :	Western Blot: 1/500 - 1/2000. Immunohistochemistry: 1/100 - 1/300. ELISA: 1/20000. Not yet tested in other applications.
Purification :	The antibody was affinity-purified from rabbit antiserum by affinity-chromatography using epitope-specific immunogen.
Concentration :	1 mg/ml
Storage_stability :	-20°C/1 year
Msds :	MSDS_Antibody.pdf
Other_name :	KDEL3; ER lumen protein retaining receptor 3; KDEL endoplasmic reticulum protein retention receptor 3; KDEL receptor 3



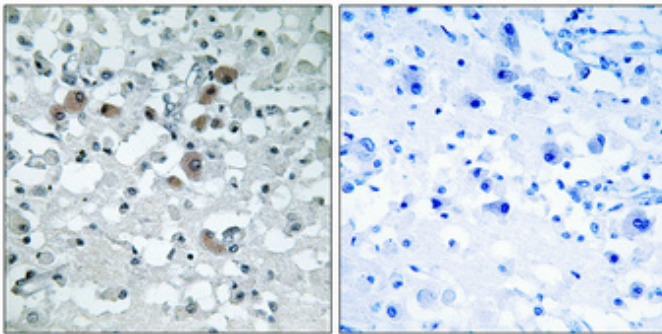
Molecular
Weight :

28KD

Product Images



Western Blot analysis of 3T3 cells using KDEL Receptor 3 Polyclonal Antibody



Immunohistochemical analysis of paraffin-embedded Human brain. Antibody was diluted at 1:100(4°, overnight). High-pressure and temperature Tris-EDTA, pH8.0 was used for antigen retrieval. Negative control (right) obtained from antibody was pre-absorbed by immunogen peptide.