



KEPI Polyclonal Antibody

Catalog_no :	AT2464
Applications :	WB,IHC-p,IF,ELISA
Reactivity :	Human,Mouse,Rat
Category :	抗原抗体
Size :	100µg/50µg/20µg
Gene_name :	PPP1R14C
Protein_name :	Protein phosphatase 1 regulatory subunit 14C
Humangene_id :	81706
Humanswissprot_no :	Q8TAE6
Mousegene_id :	76142
Mouseswissprot_no :	Q8R4S0
Ratgene_id :	171010
Ratswissprot_no :	Q8R4R9
Immunogen :	The antiserum was produced against synthesized peptide derived from human PPP1R14C. AA range:51-100
Specificity :	KEPI Polyclonal Antibody detects endogenous levels of KEPI protein.
Formulation :	Liquid in PBS containing 50% glycerol, 0.5% BSA and 0.02% sodium azide.
Source :	Rabbit
Dilution :	Western Blot: 1/500 - 1/2000. Immunohistochemistry: 1/100 - 1/300. Immunofluorescence: 1/200 - 1/1000. ELISA: 1/20000. Not yet tested in other applications.
Purification :	The antibody was affinity-purified from rabbit antiserum by affinity-chromatography using epitope-specific immunogen.
Concentration :	1 mg/ml
Storage_stability :	-20°C/1 year

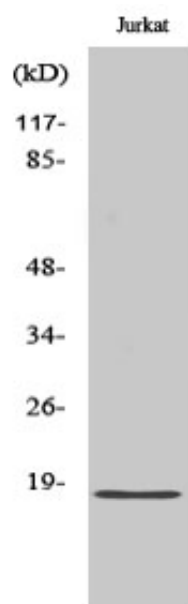


Msd : [MSDS_Antibody.pdf](#)

Other_name : PPP1R14C; KEPI; Protein phosphatase 1 regulatory subunit 14C; Kinase-enhanced PP1 inhibitor; PKC-potentiated PP1 inhibitory protein; Serologically defined breast cancer antigen NY-BR-81

Molecular Weight : 20KD

Product Images



Western Blot analysis of various cells using KEPI Polyclonal Antibody diluted at 1 : 1000