

KIR2.1 Polyclonal Antibody

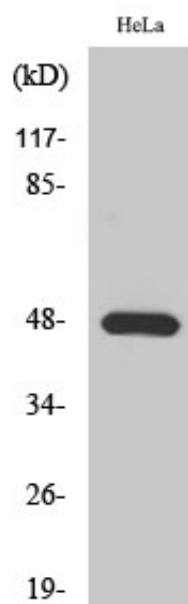
Catalog_no :	AT2473
Applications :	WB,IHC-p,ELISA
Reactivity :	Human,Rat
Category :	抗原抗体
Size :	100µg/50µg/20µg
Gene_name :	KCNJ2
Protein_name :	Inward rectifier potassium channel 2
Humangene_id :	3759
Humanswissprot_no :	P63252
Ratgene_id :	29712
Ratswissprot_no :	Q64273
Immunogen :	The antiserum was produced against synthesized peptide derived from human KCNJ2. AA range:81-130
Specificity :	KIR2.1 Polyclonal Antibody detects endogenous levels of KIR2.1 protein.
Formulation :	Liquid in PBS containing 50% glycerol, 0.5% BSA and 0.02% sodium azide.
Source :	Rabbit
Dilution :	Western Blot: 1/500 - 1/2000. Immunohistochemistry: 1/100 - 1/300. ELISA: 1/10000. Not yet tested in other applications.
Purification :	The antibody was affinity-purified from rabbit antiserum by affinity-chromatography using epitope-specific immunogen.
Concentration :	1 mg/ml
Storage_stability :	-20°C/1 year
Msds :	MSDS_Antibody.pdf
Other_name :	KCNJ2; IRK1; Inward rectifier potassium channel 2; Cardiac inward rectifier potassium channel; Inward rectifier K(+) channel Kir2.1; IRK-1; hIRK1; Potassium channel; inwardly rectifying subfamily J member 2



Molecular
Weight :

48KD

Product Images



Western Blot analysis of various cells using KIR2.1 Polyclonal Antibody diluted at 1 : 500