

## KIR2.3 Polyclonal Antibody

Catalog_no :	<u>AT2474</u>
Applications :	<u>WB,ELISA</u>
Reactivity :	<u>Human,Mouse,Rat</u>
Category :	<u>抗原抗体</u>
Size :	<u>100µg/50µg/20µg</u>
Gene_name :	<u>KCNJ4</u>
Protein_name :	<u>Inward rectifier potassium channel 4</u>
Humangene_id :	<u><a href="#">3761</a></u>
Humanswissprot_no :	<u><a href="#">P48050</a></u>
Mouseswissprot_no :	<u><a href="#">P52189</a></u>
Ratgene_id :	<u><a href="#">116649</a></u>
Ratswissprot_no :	<u><a href="#">P52190</a></u>
Immunogen :	<u>The antiserum was produced against synthesized peptide derived from human KCNJ4. AA range:251-300</u>
Specificity :	<u>KIR2.3 Polyclonal Antibody detects endogenous levels of KIR2.3 protein.</u>
Formulation :	<u>Liquid in PBS containing 50% glycerol, 0.5% BSA and 0.02% sodium azide.</u>
Source :	<u>Rabbit</u>
Dilution :	<u>Western Blot: 1/500 - 1/2000. ELISA: 1/40000. Not yet tested in other applications.</u>
Purification :	<u>The antibody was affinity-purified from rabbit antiserum by affinity-chromatography using epitope-specific immunogen.</u>
Concentration :	<u>1 mg/ml</u>
Storage_stability :	<u>-20°C/1 year</u>
Msds :	<u><a href="#">MSDS_Antibody.pdf</a></u>
Other_name :	<u>KCNJ4; IRK3; Inward rectifier potassium channel 4; HIRK2; HRK1; Hippocampal inward rectifier; HIR; Inward rectifier K(+) channel Kir2.3; IRK-3; Potassium channel; inwardly</u>



rectifying subfamily J member 4

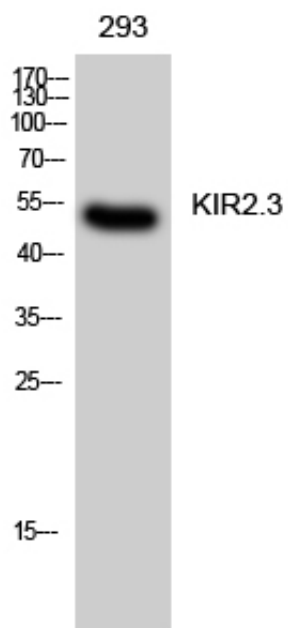
---

Molecular  
Weight :

50KD

---

## Product Images



Western Blot analysis of 293 cells using KIR2.3 Polyclonal Antibody