

## KIR3.1 Polyclonal Antibody

Catalog_no :	AT2475
Applications :	WB,IF,ELISA
Reactivity :	Human,Mouse,Rat
Category :	抗原抗体
Size :	100µg/50µg/20µg
Gene_name :	KCNJ3
Protein_name :	G protein-activated inward rectifier potassium channel 1
Humangene_id :	<a href="#">3760</a>
Humanswissprot_no :	<a href="#">P48549</a>
Mousegene_id :	<a href="#">16519</a>
Mouseswissprot_no :	<a href="#">P63250</a>
Ratgene_id :	<a href="#">50599</a>
Ratswissprot_no :	<a href="#">P63251</a>
Immunogen :	The antiserum was produced against synthesized peptide derived from human GIRK1/KIR3.1/KCNJ3. AA range:151-200
Specificity :	KIR3.1 Polyclonal Antibody detects endogenous levels of KIR3.1 protein.
Formulation :	Liquid in PBS containing 50% glycerol, 0.5% BSA and 0.02% sodium azide.
Source :	Rabbit
Dilution :	Western Blot: 1/500 - 1/2000. Immunofluorescence: 1/200 - 1/1000. ELISA: 1/20000. Not yet tested in other applications.
Purification :	The antibody was affinity-purified from rabbit antiserum by affinity-chromatography using epitope-specific immunogen.
Concentration :	1 mg/ml
Storage_stability :	-20°C/1 year
Msds :	MSDS_Antibody.pdf



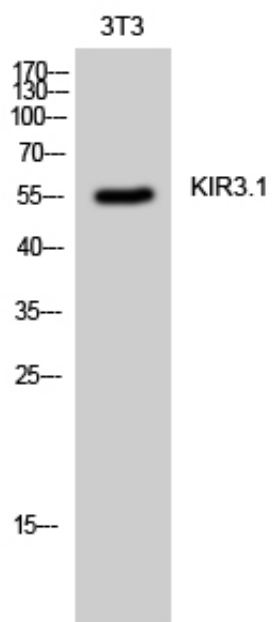
Other\_name : KCNJ3; GIRK1; G protein-activated inward rectifier potassium channel 1; GIRK-1; Inward rectifier K(+) channel Kir3.1; Potassium channel; inwardly rectifying subfamily J member 3

---

Molecular Weight : 56KD

---

## Product Images



Western Blot analysis of 3T3 cells using KIR3.1 Polyclonal Antibody