



## KIR5.1 Polyclonal Antibody

Catalog_no :	AT2478
Applications :	WB,IHC-p,IF,ELISA
Reactivity :	Human,Mouse,Rat
Category :	抗原抗体
Size :	100µg/50µg/20µg
Gene_name :	KCNJ16
Protein_name :	Inward rectifier potassium channel 16
Humangene_id	<a href="#">16517</a>
:	
Humanswissprot	<a href="#">Q9NPI9</a>
_no :	
Mousegene_id :	<a href="#">16517</a>
Mouseswissprot	<a href="#">Q9Z307</a>
_no :	
Ratswissprot_no	<a href="#">P52191</a>
:	
Immunogen :	The antiserum was produced against synthesized peptide derived from mouse Kir5.1. AA range:369-418
Specificity :	KIR5.1 Polyclonal Antibody detects endogenous levels of KIR5.1 protein.
Formulation :	Liquid in PBS containing 50% glycerol, 0.5% BSA and 0.02% sodium azide.
Source :	Rabbit
Dilution :	Western Blot: 1/500 - 1/2000. Immunohistochemistry: 1/100 - 1/300. Immunofluorescence: 1/200 - 1/1000. ELISA: 1/10000. Not yet tested in other applications.
Purification :	The antibody was affinity-purified from rabbit antiserum by affinity-chromatography using epitope-specific immunogen.
Concentration :	1 mg/ml
Storage_stability	-20°C/1 year
:	
Msds :	<a href="#">MSDS_Antibody.pdf</a>



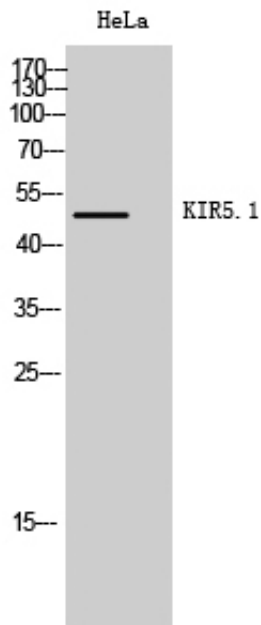
Other\_name : KCNJ16; Inward rectifier potassium channel 16; Inward rectifier K(+) channel Kir5.1; Potassium channel; inwardly rectifying subfamily J member 16

---

Molecular Weight : 48KD

---

## Product Images



Western Blot analysis of HeLa cells using KIR5.1 Polyclonal Antibody