

KIR6.2 Polyclonal Antibody

Catalog_no :	AT2479
Applications :	WB,IHC-p,IF,ELISA
Reactivity :	Human,Mouse,Rat
Category :	抗原抗体
Size :	100µg/50µg/20µg
Gene_name :	KCNJ11
Protein_name :	ATP-sensitive inward rectifier potassium channel 11
Humangene_id :	3767
Humanswissprot_no :	Q14654
Mousegene_id :	16514
Mouseswissprot_no :	Q61743
Ratgene_id :	83535
Ratswissprot_no :	P70673
Immunogen :	The antiserum was produced against synthesized peptide derived from human Kir6.2. AA range:190-239
Specificity :	KIR6.2 Polyclonal Antibody detects endogenous levels of KIR6.2 protein.
Formulation :	Liquid in PBS containing 50% glycerol, 0.5% BSA and 0.02% sodium azide.
Source :	Rabbit
Dilution :	Western Blot: 1/500 - 1/2000. Immunohistochemistry: 1/100 - 1/300. Immunofluorescence: 1/200 - 1/1000. ELISA: 1/10000. Not yet tested in other applications.
Purification :	The antibody was affinity-purified from rabbit antiserum by affinity-chromatography using epitope-specific immunogen.
Concentration :	1 mg/ml
Storage_stability :	-20°C/1 year

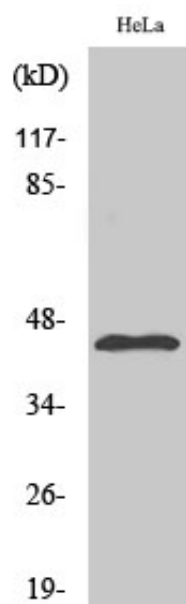


MsdS : MSDS_Antibody.pdf

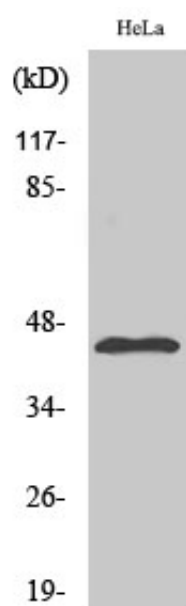
Other_name : KCNJ11; ATP-sensitive inward rectifier potassium channel 11; IKATP; Inward rectifier K(+) channel Kir6.2; Potassium channel; inwardly rectifying subfamily J member 11

Molecular Weight : 40KD

Product Images

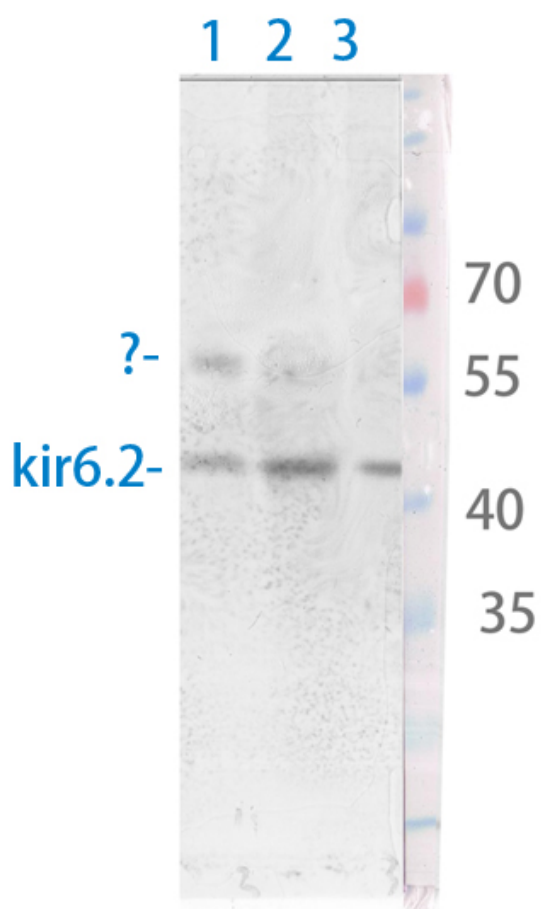


Western Blot analysis of various cells using KIR6.2 Polyclonal Antibody diluted at 1 : 500



Western Blot analysis of NIH-3T3 cells using KIR6.2 Polyclonal Antibody diluted at 1 : 500

Western Blot analysis of various cells using Antibody diluted at 1:1000. Secondary antibody was diluted at 1:20000



1 hela

2 mouse-liver

3 mouse-brain