

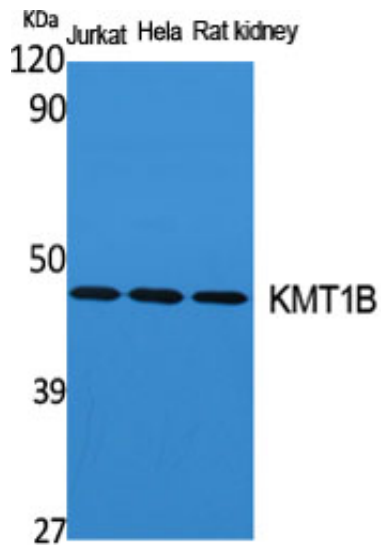
KMT1B Polyclonal Antibody

Catalog_no :	AT2487
Applications :	WB,ELISA
Reactivity :	Human,Mouse
Category :	抗原抗体
Size :	100µg/50µg/20µg
Gene_name :	SUV39H2
Protein_name :	Histone-lysine N-methyltransferase SUV39H2
Humangene_id :	79723
Humanswissprot_no :	Q9H5I1
Mousegene_id :	64707
Mouseswissprot_no :	Q9EQQ0
Immunogen :	The antiserum was produced against synthesized peptide derived from human SUV39H2. AA range:111-160
Specificity :	KMT1B Polyclonal Antibody detects endogenous levels of KMT1B protein.
Formulation :	Liquid in PBS containing 50% glycerol, 0.5% BSA and 0.02% sodium azide.
Source :	Rabbit
Dilution :	Western Blot: 1/500 - 1/2000. ELISA: 1/40000. Not yet tested in other applications.
Purification :	The antibody was affinity-purified from rabbit antiserum by affinity-chromatography using epitope-specific immunogen.
Concentration :	1 mg/ml
Storage_stability :	-20°C/1 year
Msds :	MSDS_Antibody.pdf
Other_name :	SUV39H2; KMT1B; Histone-lysine N-methyltransferase SUV39H2; Histone H3-K9 methyltransferase 2; H3-K9-HMTase 2; Lysine N-methyltransferase 1B; Suppressor of variegation 3-9 homolog 2; Su(var)3-9 homolog 2
Molecular	46KD

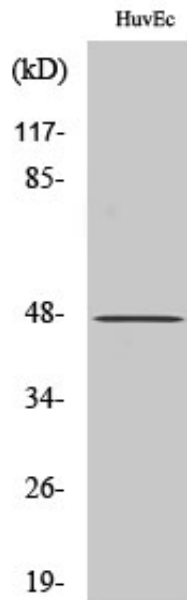


Weight :

Product Images



Western Blot analysis of various cells using KMT1B Polyclonal Antibody cells nucleus extracted by Minute TM Cytoplasmic and Nuclear Fractionation kit (SC-003, Inventbiotech, MN, USA).



Western Blot analysis of COLO205 cells using KMT1B Polyclonal Antibody cells nucleus extracted by Minute TM Cytoplasmic and Nuclear Fractionation kit (SC-003, Inventbiotech, MN, USA).