

KOX11 Polyclonal Antibody

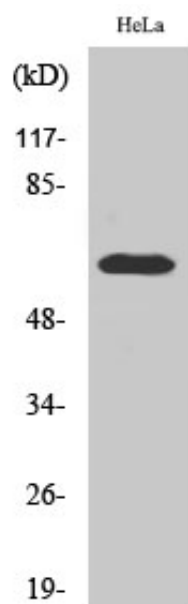
Catalog_no :	AT2490
Applications :	WB,ELISA
Reactivity :	Human,Mouse,Rat
Category :	抗原抗体
Size :	100µg/50µg/20µg
Gene_name :	ZNF18
Protein_name :	Zinc finger protein 18
Humangene_id :	7566
Humanswissprot_no :	P17022
Mousegene_id :	52712
Mouseswissprot_no :	Q810A1
Ratgene_id :	303226
Ratswissprot_no :	Q642B9
Immunogen :	The antiserum was produced against synthesized peptide derived from human ZNF18. AA range:261-310
Specificity :	KOX11 Polyclonal Antibody detects endogenous levels of KOX11 protein.
Formulation :	Liquid in PBS containing 50% glycerol, 0.5% BSA and 0.02% sodium azide.
Source :	Rabbit
Dilution :	Western Blot: 1/500 - 1/2000. ELISA: 1/20000. Not yet tested in other applications.
Purification :	The antibody was affinity-purified from rabbit antiserum by affinity-chromatography using epitope-specific immunogen.
Concentration :	1 mg/ml
Storage_stability :	-20°C/1 year
Msds :	MSDS_Antibody.pdf



Other_name : ZNF18; HDSG1; KOX11; ZKSCAN6; ZNF535; Zinc finger protein 18; Heart development-specific gene 1 protein; Zinc finger protein 535; Zinc finger protein KOX11; Zinc finger protein with KRAB and SCAN domains 6

Molecular Weight : 62KD

Product Images



Western Blot analysis of various cells using KOX11 Polyclonal Antibody