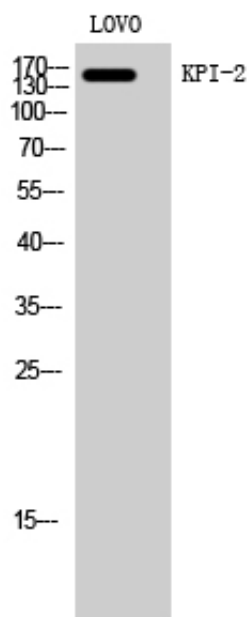


KPI-2 Polyclonal Antibody

Catalog_no :	AT2493
Applications :	WB,IHC-p,IF,ELISA
Reactivity :	Human
Category :	抗原抗体
Size :	100µg/50µg/20µg
Gene_name :	LMTK2
Protein_name :	Serine/threonine-protein kinase LMTK2
Humangene_id :	22853
Humanswissprot_no :	Q8IWU2
Immunogen :	The antiserum was produced against synthesized peptide derived from human LMTK2. AA range:651-700
Specificity :	KPI-2 Polyclonal Antibody detects endogenous levels of KPI-2 protein.
Formulation :	Liquid in PBS containing 50% glycerol, 0.5% BSA and 0.02% sodium azide.
Source :	Rabbit
Dilution :	Western Blot: 1/500 - 1/2000. Immunohistochemistry: 1/100 - 1/300. Immunofluorescence: 1/200 - 1/1000. ELISA: 1/20000. Not yet tested in other applications.
Purification :	The antibody was affinity-purified from rabbit antiserum by affinity-chromatography using epitope-specific immunogen.
Concentration :	1 mg/ml
Storage_stability :	-20°C/1 year
Msds :	MSDS_Antibody.pdf
Other_name :	LMTK2; AATYK2; BREK; KIAA1079; KPI2; LMR2; Serine/threonine-protein kinase LMTK2; Apoptosis-associated tyrosine kinase 2; Brain-enriched kinase; hBREK; CDK5/p35-regulated kinase; CPRK; Kinase/phosphatase/inhibitor 2; Lemur tyrosine kinase 2
Molecular Weight :	164KD

Product Images



Western Blot analysis of LOVO cells using KPI-2 Polyclonal Antibody