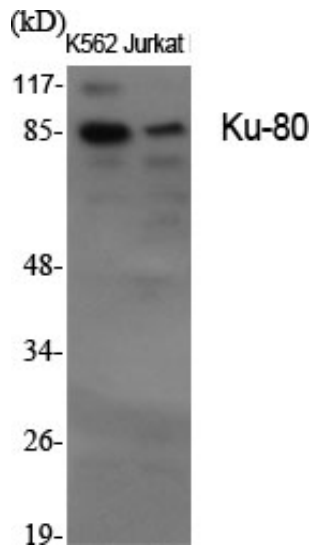


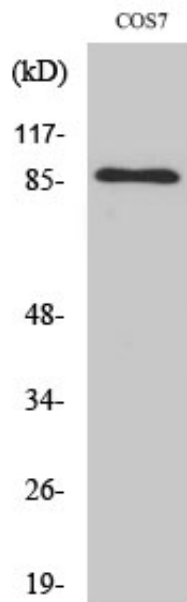
## Ku-80 Polyclonal Antibody

Catalog_no :	AT2501
Applications :	WB,IHC-p,IF,ELISA
Reactivity :	Human,Monkey
Category :	抗原抗体
Size :	100µg/50µg/20µg
Gene_name :	XRCC5
Protein_name :	X-ray repair cross-complementing protein 5
Humangene_id :	<a href="#">7520</a>
Humanswissprot_no :	<a href="#">P13010</a>
Immunogen :	The antiserum was produced against synthesized peptide derived from human Ku70/80. AA range:683-732
Specificity :	Ku-80 Polyclonal Antibody detects endogenous levels of Ku-80 protein.
Formulation :	Liquid in PBS containing 50% glycerol, 0.5% BSA and 0.02% sodium azide.
Source :	Rabbit
Dilution :	Western Blot: 1/500 - 1/2000. Immunohistochemistry: 1/100 - 1/300. Immunofluorescence: 1/200 - 1/1000. ELISA: 1/20000. Not yet tested in other applications.
Purification :	The antibody was affinity-purified from rabbit antiserum by affinity-chromatography using epitope-specific immunogen.
Concentration :	1 mg/ml
Storage_stability :	-20°C/1 year
Msds :	MSDS_Antibody.pdf
Other_name :	XRCC5; G22P2; X-ray repair cross-complementing protein 5; 86 kDa subunit of Ku antigen; ATP-dependent DNA helicase 2 subunit 2; ATP-dependent DNA helicase II 80 kDa subunit; CTC box-binding factor 85 kDa subunit; CTC85; CTCBF; DNA repair pr
Molecular Weight :	80KD

## Product Images



Western Blot analysis of various cells using Ku-80 Polyclonal Antibody



Western Blot analysis of COS7 cells using Ku-80 Polyclonal Antibody