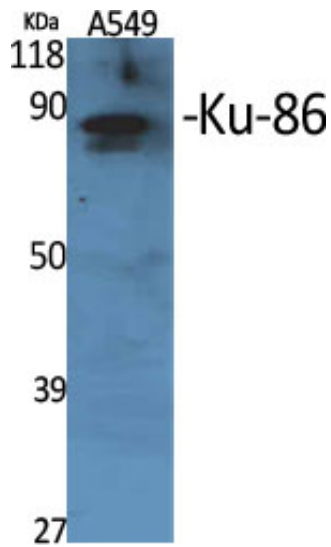


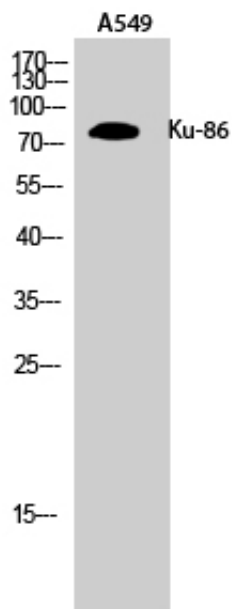
Ku-86 Polyclonal Antibody

Catalog_no :	AT2504
Applications :	WB,IHC-p,ELISA
Reactivity :	Human
Category :	抗原抗体
Size :	100µg/50µg/20µg
Gene_name :	XRCC5
Protein_name :	X-ray repair cross-complementing protein 5
Humangene_id :	7520
Humanswissprot_no :	P13010
Immunogen :	The antiserum was produced against synthesized peptide derived from human XRCC5. AA range:441-490
Specificity :	Ku-86 Polyclonal Antibody detects endogenous levels of Ku-86 protein.
Formulation :	Liquid in PBS containing 50% glycerol, 0.5% BSA and 0.02% sodium azide.
Source :	Rabbit
Dilution :	Western Blot: 1/500 - 1/2000. Immunohistochemistry: 1/100 - 1/300. ELISA: 1/40000. Not yet tested in other applications.
Purification :	The antibody was affinity-purified from rabbit antiserum by affinity-chromatography using epitope-specific immunogen.
Concentration :	1 mg/ml
Storage_stability :	-20°C/1 year
Msds :	MSDS_Antibody.pdf
Other_name :	XRCC5; G22P2; X-ray repair cross-complementing protein 5; 86 kDa subunit of Ku antigen; ATP-dependent DNA helicase 2 subunit 2; ATP-dependent DNA helicase II 80 kDa subunit; CTC box-binding factor 85 kDa subunit; CTC85; CTCBF; DNA repair pr
Molecular Weight :	80KD

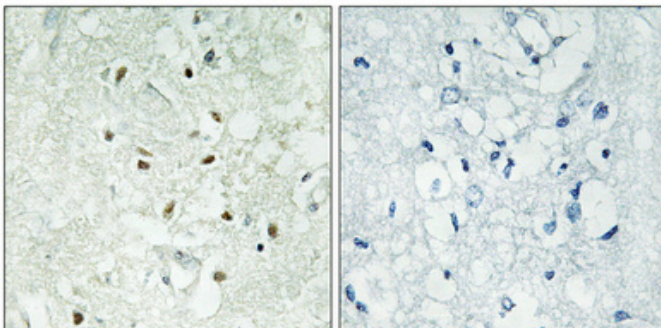
Product Images



Western Blot analysis of various cells using Ku-86 Polyclonal Antibody



Western Blot analysis of A549 cells using Ku-86 Polyclonal Antibody



Immunohistochemical analysis of paraffin-embedded Human brain. Antibody was diluted at 1:100(4°, overnight). High-pressure and temperature Tris-EDTA, pH8.0 was used for antigen retrieval. Negative control (right) obtained from antibody was pre-absorbed by immunogen peptide.