



Kv1.3 Polyclonal Antibody

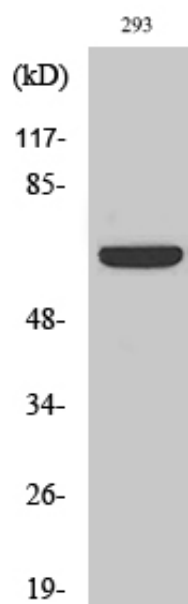
Catalog_no :	AT2506
Applications :	WB,IHC-p,IF,ELISA
Reactivity :	Human,Mouse,Rat
Category :	抗原抗体
Size :	100µg/50µg/20µg
Gene_name :	KCNA3
Protein_name :	Potassium voltage-gated channel subfamily A member 3
Humangene_id :	3738
Humanswissprot_no :	P22001
Mousegene_id :	16491
Mouseswissprot_no :	P16390
Ratgene_id :	29731
Ratswissprot_no :	P15384
Immunogen :	The antiserum was produced against synthesized peptide derived from human Kv1.3/KCNA3. AA range:101-150
Specificity :	Kv1.3 Polyclonal Antibody detects endogenous levels of Kv1.3 protein.
Formulation :	Liquid in PBS containing 50% glycerol, 0.5% BSA and 0.02% sodium azide.
Source :	Rabbit
Dilution :	Western Blot: 1/500 - 1/2000. Immunohistochemistry: 1/100 - 1/300. Immunofluorescence: 1/200 - 1/1000. ELISA: 1/20000. Not yet tested in other applications.
Purification :	The antibody was affinity-purified from rabbit antiserum by affinity-chromatography using epitope-specific immunogen.
Concentration :	1 mg/ml
Storage_stability :	-20°C/1 year



MsdS : [MSDS_Antibody.pdf](#)

Other_name : KCNA3; HGK5; Potassium voltage-gated channel subfamily A member 3; HGK5; HLK3; HPCN3; Voltage-gated K(+) channel HuKIII; Voltage-gated potassium channel subunit Kv1.3

Product Images



Western Blot analysis of various cells using Kv1.3 Polyclonal Antibody diluted at 1 : 500