

## KV1.5 Polyclonal Antibody

Catalog_no :	<u>AT2507</u>
Applications :	<u>WB,ELISA</u>
Reactivity :	<u>Human,Mouse,Rat</u>
Category :	<u>抗原抗体</u>
Size :	<u>100µg/50µg/20µg</u>
Gene_name :	<u>KCNA5</u>
Protein_name :	<u>Potassium voltage-gated channel subfamily A member 5</u>
Humangene_id :	<u><a href="#">3741</a></u>
Humanswissprot_no :	<u><a href="#">P22460</a></u>
Mousegene_id :	<u><a href="#">16493</a></u>
Mouseswissprot_no :	<u><a href="#">Q61762</a></u>
Ratgene_id :	<u><a href="#">25470</a></u>
Ratswissprot_no :	<u><a href="#">P19024</a></u>
Immunogen :	<u>The antiserum was produced against synthesized peptide derived from human KCNA5. AA range:253-302</u>
Specificity :	<u>KV1.5 Polyclonal Antibody detects endogenous levels of KV1.5 protein.</u>
Formulation :	<u>Liquid in PBS containing 50% glycerol, 0.5% BSA and 0.02% sodium azide.</u>
Source :	<u>Rabbit</u>
Dilution :	<u>Western Blot: 1/500 - 1/2000. ELISA: 1/40000. Not yet tested in other applications.</u>
Purification :	<u>The antibody was affinity-purified from rabbit antiserum by affinity-chromatography using epitope-specific immunogen.</u>
Concentration :	<u>1 mg/ml</u>
Storage_stability :	<u>-20°C/1 year</u>
Msds :	<u><a href="#">MSDS_Antibody.pdf</a></u>



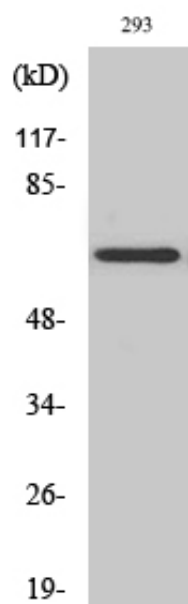
Other\_name : KCNA5; Potassium voltage-gated channel subfamily A member 5; HPCN1; Voltage-gated potassium channel HK2; Voltage-gated potassium channel subunit Kv1.5

---

Molecular Weight : 68KD

---

## Product Images



Western Blot analysis of various cells using KV1.5 Polyclonal Antibody diluted at 1 : 500