



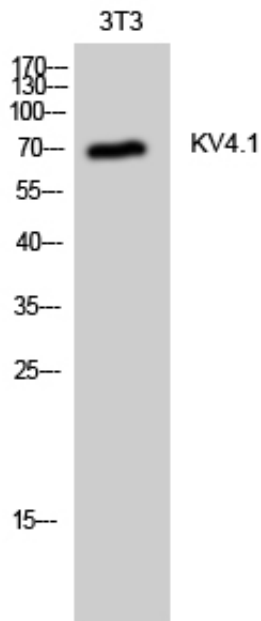
KV4.1 Polyclonal Antibody

Catalog_no :	AT2513
Applications :	WB,IHC-p,ELISA
Reactivity :	Human,Mouse
Category :	抗原抗体
Size :	100µg/50µg/20µg
Gene_name :	KCND1
Protein_name :	Potassium voltage-gated channel subfamily D member 1
Humangene_id :	3750
Humanswissprot_no :	Q9NSA2
Mousegene_id :	16506
Mouseswissprot_no :	Q03719
Immunogen :	The antiserum was produced against synthesized peptide derived from human KCND1. AA range:558-607
Specificity :	KV4.1 Polyclonal Antibody detects endogenous levels of KV4.1 protein.
Formulation :	Liquid in PBS containing 50% glycerol, 0.5% BSA and 0.02% sodium azide.
Source :	Rabbit
Dilution :	Western Blot: 1/500 - 1/2000. Immunohistochemistry: 1/100 - 1/300. ELISA: 1/20000. Not yet tested in other applications.
Purification :	The antibody was affinity-purified from rabbit antiserum by affinity-chromatography using epitope-specific immunogen.
Concentration :	1 mg/ml
Storage_stability :	-20°C/1 year
Msds :	MSDS_Antibody.pdf
Other_name :	KCND1; Potassium voltage-gated channel subfamily D member 1; Voltage-gated potassium channel subunit Kv4.1
Molecular	70KD



Weight :

Product Images



Western Blot analysis of 3T3 cells using KV4.1 Polyclonal Antibody