

KV8.2 Polyclonal Antibody

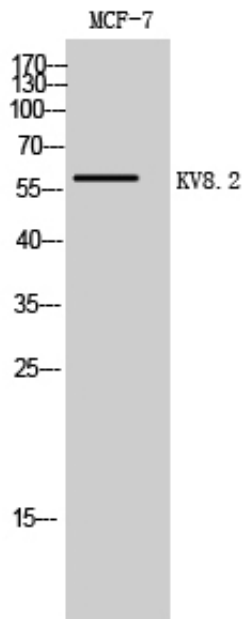
Catalog_no :	AT2515
Applications :	WB,ELISA
Reactivity :	Human,Mouse
Category :	抗原抗体
Size :	100µg/50µg/20µg
Gene_name :	KCNV2
Protein_name :	Potassium voltage-gated channel subfamily V member 2
Humangene_id :	169522
Humanswissprot_no :	Q8TDN2
Mousegene_id :	240595
Mouseswissprot_no :	Q8CFS6
Immunogen :	The antiserum was produced against synthesized peptide derived from human KCNV2. AA range:187-236
Specificity :	KV8.2 Polyclonal Antibody detects endogenous levels of KV8.2 protein.
Formulation :	Liquid in PBS containing 50% glycerol, 0.5% BSA and 0.02% sodium azide.
Source :	Rabbit
Dilution :	Western Blot: 1/500 - 1/2000. ELISA: 1/20000. Not yet tested in other applications.
Purification :	The antibody was affinity-purified from rabbit antiserum by affinity-chromatography using epitope-specific immunogen.
Concentration :	1 mg/ml
Storage_stability :	-20°C/1 year
Msds :	MSDS_Antibody.pdf
Other_name :	KCNV2; Potassium voltage-gated channel subfamily V member 2; Voltage-gated potassium channel subunit Kv8.2
Molecular Weight :	62KD



专注二抗产品

Biodragon旗下品牌

Product Images



Western Blot analysis of MCF-7 cells using KV8.2 Polyclonal Antibody