

KV9.2 Polyclonal Antibody

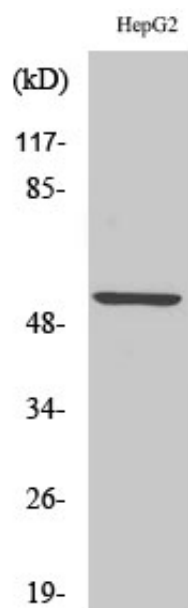
Catalog_no :	AT2516
Applications :	WB,ELISA
Reactivity :	Human,Mouse,Rat
Category :	抗原抗体
Size :	100µg/50µg/20µg
Gene_name :	KCNS2
Protein_name :	Potassium voltage-gated channel subfamily S member 2
Humangene_id :	3788
Humanswissprot_no :	Q9ULS6
Mousegene_id :	16539
Mouseswissprot_no :	O35174
Ratgene_id :	66022
Ratswissprot_no :	Q9ER26
Immunogen :	The antiserum was produced against synthesized peptide derived from human KCNS2. AA range:197-246
Specificity :	KV9.2 Polyclonal Antibody detects endogenous levels of KV9.2 protein.
Formulation :	Liquid in PBS containing 50% glycerol, 0.5% BSA and 0.02% sodium azide.
Source :	Rabbit
Dilution :	Western Blot: 1/500 - 1/2000. ELISA: 1/40000. Not yet tested in other applications.
Purification :	The antibody was affinity-purified from rabbit antiserum by affinity-chromatography using epitope-specific immunogen.
Concentration :	1 mg/ml
Storage_stability :	-20°C/1 year
Msds :	MSDS_Antibody.pdf



Other_name : KCNS2; KIAA1144; Potassium voltage-gated channel subfamily S member 2; Delayed-rectifier K(+) channel alpha subunit 2; Voltage-gated potassium channel subunit Kv9.2

Molecular Weight : 54KD

Product Images



Western Blot analysis of various cells using KV9.2 Polyclonal Antibody