

## KVβ.3 Polyclonal Antibody

Catalog_no :	<u>AT2517</u>
Applications :	<u>WB,IHC-p,ELISA</u>
Reactivity :	<u>Human,Mouse,Rat</u>
Category :	<u>抗原抗体</u>
Size :	<u>100μg/50μg/20μg</u>
Gene_name :	<u>KCNAB3</u>
Protein_name :	<u>Voltage-gated potassium channel subunit beta-3</u>
Humangene_id	<u><a href="#">9196</a></u>
:	
Humanswissprot	<u><a href="#">O43448</a></u>
_no :	
Mouseswissprot	<u><a href="#">P97382</a></u>
_no :	
Ratgene_id :	<u><a href="#">58981</a></u>
Ratswissprot_no	<u><a href="#">Q63494</a></u>
:	
Immunogen :	<u>The antiserum was produced against synthesized peptide derived from human KCNAB3. AA range:293-342</u>
Specificity :	<u>KVβ.3 Polyclonal Antibody detects endogenous levels of KVβ.3 protein.</u>
Formulation :	<u>Liquid in PBS containing 50% glycerol, 0.5% BSA and 0.02% sodium azide.</u>
Source :	<u>Rabbit</u>
Dilution :	<u>Western Blot: 1/500 - 1/2000. Immunohistochemistry: 1/100 - 1/300. ELISA: 1/10000. Not yet tested in other applications.</u>
Purification :	<u>The antibody was affinity-purified from rabbit antiserum by affinity-chromatography using epitope-specific immunogen.</u>
Concentration :	<u>1 mg/ml</u>
Storage_stability	<u>-20°C/1 year</u>
:	
Msds :	<u>MSDS_Antibody.pdf</u>
Other_name :	<u>KCNAB3; KCNA3B; Voltage-gated potassium channel subunit beta-3; K(+) channel</u>



subunit beta-3; Kv-beta-3

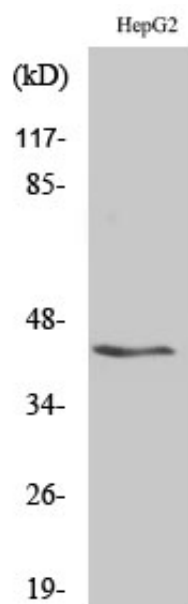
---

Molecular  
Weight :

45KD

---

## Product Images



Western Blot analysis of various cells using KV $\beta$ .3 Polyclonal Antibody