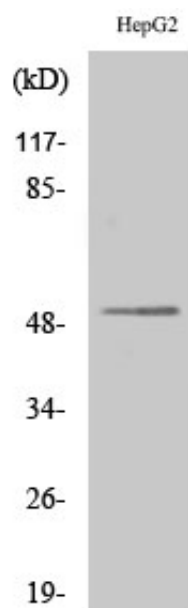


## Lad Polyclonal Antibody

Catalog_no :	AT2518
Applications :	WB,IHC-p,ELISA
Reactivity :	Human
Category :	抗原抗体
Size :	100µg/50µg/20µg
Gene_name :	SH2D2A
Protein_name :	SH2 domain-containing protein 2A
Humangene_id :	<a href="#">9047</a>
Humanswissprot_no :	<a href="#">Q9NP31</a>
Immunogen :	The antiserum was produced against synthesized peptide derived from human SH2D2A. AA range:211-260
Specificity :	Lad Polyclonal Antibody detects endogenous levels of Lad protein.
Formulation :	Liquid in PBS containing 50% glycerol, 0.5% BSA and 0.02% sodium azide.
Source :	Rabbit
Dilution :	Western Blot: 1/500 - 1/2000. Immunohistochemistry: 1/100 - 1/300. ELISA: 1/10000. Not yet tested in other applications.
Purification :	The antibody was affinity-purified from rabbit antiserum by affinity-chromatography using epitope-specific immunogen.
Concentration :	1 mg/ml
Storage_stability :	-20°C/1 year
Msds :	MSDS_Antibody.pdf
Other_name :	SH2D2A; SCAP; TSAD; VRAP; SH2 domain-containing protein 2A; SH2 domain-containing adapter protein; T cell-specific adapter protein; TSAd; VEGF receptor-associated protein
Molecular Weight :	48KD

## Product Images



Western Blot analysis of various cells using Lad Polyclonal Antibody