

Laminin α -4 Polyclonal Antibody

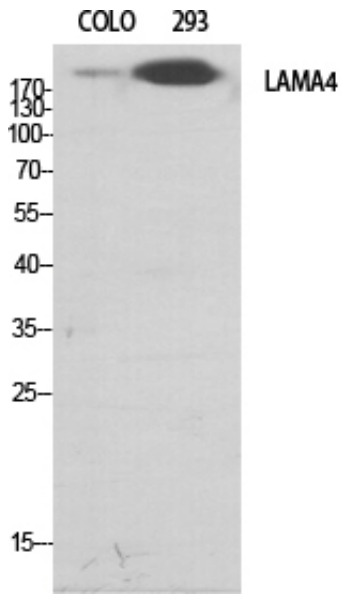
Catalog_no :	AT2526
Applications :	WB,IHC-p,IF,ELISA
Reactivity :	Human,Mouse
Category :	抗原抗体
Size :	100 μ g/50 μ g/20 μ g
Gene_name :	LAMA4
Protein_name :	Laminin subunit alpha-4
Humangene_id :	3910
Humanswissprot_no :	Q16363
Mousegene_id :	16775
Mouseswissprot_no :	P97927
Immunogen :	The antiserum was produced against synthesized peptide derived from human LAMA4. AA range:481-530
Specificity :	Laminin α -4 Polyclonal Antibody detects endogenous levels of Laminin α -4 protein.
Formulation :	Liquid in PBS containing 50% glycerol, 0.5% BSA and 0.02% sodium azide.
Source :	Rabbit
Dilution :	Western Blot: 1/500 - 1/2000. Immunohistochemistry: 1/100 - 1/300. Immunofluorescence: 1/200 - 1/1000. ELISA: 1/40000. Not yet tested in other applications.
Purification :	The antibody was affinity-purified from rabbit antiserum by affinity-chromatography using epitope-specific immunogen.
Concentration :	1 mg/ml
Storage_stability :	-20°C/1 year
Msds :	MSDS_Antibody.pdf
Other_name :	LAMA4; Laminin subunit alpha-4; Laminin-14 subunit alpha; Laminin-8 subunit alpha; Laminin-9 subunit alpha



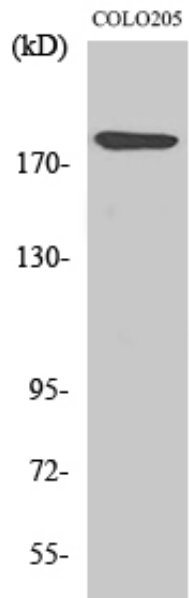
Molecular
Weight :

203KD

Product Images



Western Blot analysis of various cells using Laminin α -4 Polyclonal Antibody diluted at 1 : 500



Western Blot analysis of 293 cells using Laminin α -4 Polyclonal Antibody diluted at 1 : 500