

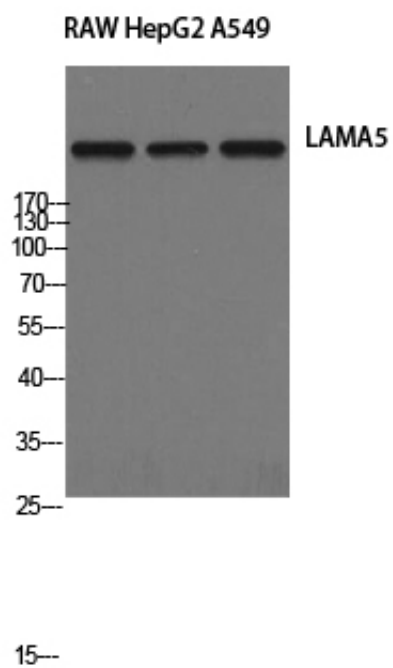
Laminin α -5 Polyclonal Antibody

Catalog_no :	AT2527
Applications :	WB,IHC-p,ELISA
Reactivity :	Human,Mouse
Category :	抗原抗体
Size :	100 μ g/50 μ g/20 μ g
Gene_name :	LAMA5
Protein_name :	Laminin subunit alpha-5
Humangene_id :	3911
Humanswissprot_no :	O15230
Mousegene_id :	16776
Mouseswissprot_no :	Q61001
Immunogen :	The antiserum was produced against synthesized peptide derived from human LAMA5. AA range:2381-2430
Specificity :	Laminin α -5 Polyclonal Antibody detects endogenous levels of Laminin α -5 protein.
Formulation :	Liquid in PBS containing 50% glycerol, 0.5% BSA and 0.02% sodium azide.
Source :	Rabbit
Dilution :	Western Blot: 1/500 - 1/2000. Immunohistochemistry: 1/100 - 1/300. ELISA: 1/20000. Not yet tested in other applications.
Purification :	The antibody was affinity-purified from rabbit antiserum by affinity-chromatography using epitope-specific immunogen.
Concentration :	1 mg/ml
Storage_stability :	-20°C/1 year
Msds :	MSDS_Antibody.pdf
Other_name :	LAMA5; KIAA0533; KIAA1907; Laminin subunit alpha-5; Laminin-10 subunit alpha; Laminin-11 subunit alpha; Laminin-15 subunit alpha
Molecular	400KD



Weight :

Product Images



Western Blot analysis of RAW HepG2 A549 cells using Laminin α -5 Polyclonal Antibody