

Laminin β -2 Polyclonal Antibody

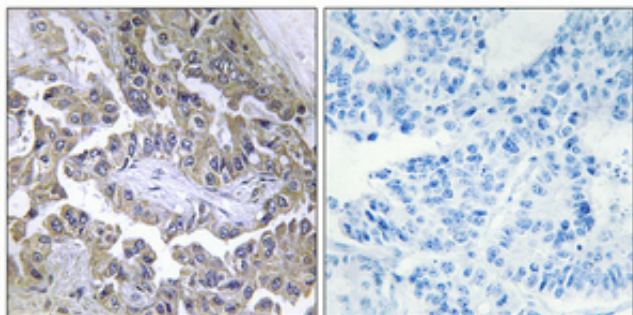
Catalog_no :	AT2529
Applications :	WB,IHC-p,ELISA
Reactivity :	Human,Mouse,Rat
Category :	抗原抗体
Size :	100 μ g/50 μ g/20 μ g
Gene_name :	LAMB2
Protein_name :	Laminin subunit beta-2
Humangene_id :	3913
Humanswissprot_no :	P55268
Mousegene_id :	16779
Mouseswissprot_no :	Q61292
Ratgene_id :	25473
Ratswissprot_no :	P15800
Immunogen :	The antiserum was produced against synthesized peptide derived from human LAMB2. AA range:61-110
Specificity :	Laminin β -2 Polyclonal Antibody detects endogenous levels of Laminin β -2 protein.
Formulation :	Liquid in PBS containing 50% glycerol, 0.5% BSA and 0.02% sodium azide.
Source :	Rabbit
Dilution :	Western Blot: 1/500 - 1/2000. Immunohistochemistry: 1/100 - 1/300. ELISA: 1/5000. Not yet tested in other applications.
Purification :	The antibody was affinity-purified from rabbit antiserum by affinity-chromatography using epitope-specific immunogen.
Concentration :	1 mg/ml
Storage_stability :	-20°C/1 year
Msds :	MSDS_Antibody.pdf



Other_name : LAMB2; LAMS; Laminin subunit beta-2; Laminin B1s chain; Laminin-11 subunit beta; Laminin-14 subunit beta; Laminin-15 subunit beta; Laminin-3 subunit beta; Laminin-4 subunit beta; Laminin-7 subunit beta; Laminin-9 subunit beta; S-laminin sub

Molecular Weight : 210KD

Product Images



Immunohistochemical analysis of paraffin-embedded Human lung cancer. Antibody was diluted at 1:100(4°,overnight). High-pressure and temperature Tris-EDTA,pH8.0 was used for antigen retrieval. Negative contrl (right) obtaned from antibody was pre-absorbed by immunogen peptide.