

Laminin γ -3 Polyclonal Antibody

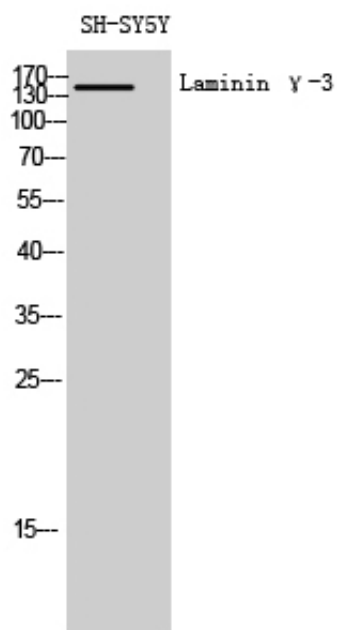
Catalog_no :	AT2532
Applications :	WB,IHC-p,IF,ELISA
Reactivity :	Human,Mouse
Category :	抗原抗体
Size :	100 μ g/50 μ g/20 μ g
Gene_name :	LAMC3
Protein_name :	Laminin subunit gamma-3
Humangene_id :	10319
Humanswissprot_no :	Q9Y6N6
Mousegene_id :	23928
Mouseswissprot_no :	Q9R0B6
Immunogen :	The antiserum was produced against synthesized peptide derived from human LAMC3. AA range:1361-1410
Specificity :	Laminin γ -3 Polyclonal Antibody detects endogenous levels of Laminin γ -3 protein.
Formulation :	Liquid in PBS containing 50% glycerol, 0.5% BSA and 0.02% sodium azide.
Source :	Rabbit
Dilution :	Western Blot: 1/500 - 1/2000. Immunohistochemistry: 1/100 - 1/300. Immunofluorescence: 1/200 - 1/1000. ELISA: 1/40000. Not yet tested in other applications.
Purification :	The antibody was affinity-purified from rabbit antiserum by affinity-chromatography using epitope-specific immunogen.
Concentration :	1 mg/ml
Storage_stability :	-20°C/1 year
Msds :	MSDS_Antibody.pdf
Other_name :	LAMC3; Laminin subunit gamma-3; Laminin-12 subunit gamma; Laminin-14 subunit gamma; Laminin-15 subunit gamma



Molecular
Weight :

170KD

Product Images



Western Blot analysis of SH-SY5Y cells using Laminin γ -3 Polyclonal Antibody diluted at 1 : 1000