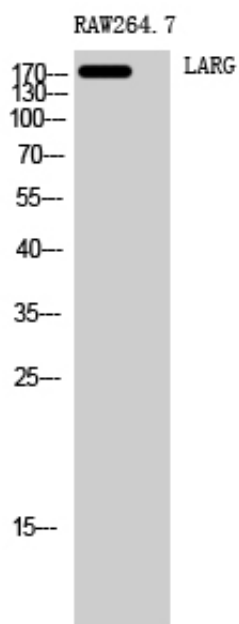


## LARG Polyclonal Antibody

Catalog_no :	AT2535
Applications :	WB,ELISA
Reactivity :	Human,Mouse,Rat
Category :	抗原抗体
Size :	100µg/50µg/20µg
Gene_name :	ARHGEF12
Protein_name :	Rho guanine nucleotide exchange factor 12
Humangene_id :	<a href="#">23365</a>
Humanswissprot_no :	<a href="#">Q9NZN5</a>
Mouseswissprot_no :	<a href="#">Q8R4H2</a>
Immunogen :	The antiserum was produced against synthesized peptide derived from human ARHGEF12. AA range:449-498
Specificity :	LARG Polyclonal Antibody detects endogenous levels of LARG protein.
Formulation :	Liquid in PBS containing 50% glycerol, 0.5% BSA and 0.02% sodium azide.
Source :	Rabbit
Dilution :	Western Blot: 1/500 - 1/2000. ELISA: 1/20000. Not yet tested in other applications.
Purification :	The antibody was affinity-purified from rabbit antiserum by affinity-chromatography using epitope-specific immunogen.
Concentration :	1 mg/ml
Storage_stability :	-20°C/1 year
Msds :	MSDS_Antibody.pdf
Other_name :	ARHGEF12; KIAA0382; LARG; Rho guanine nucleotide exchange factor 12; Leukemia-associated RhoGEF
Molecular Weight :	173KD

## Product Images



Western Blot analysis of RAW264.7 cells using LARG Polyclonal Antibody