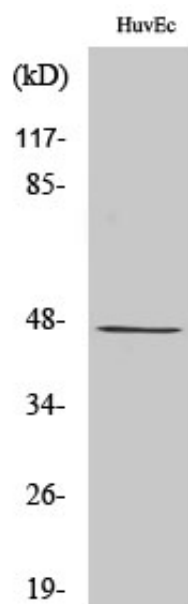




LASS4 Polyclonal Antibody

Catalog_no :	AT2536
Applications :	WB,IHC-p,ELISA
Reactivity :	Human
Category :	抗原抗体
Size :	100µg/50µg/20µg
Gene_name :	CERS4
Protein_name :	Ceramide synthase 4
Humangene_id :	79603
Humanswissprot_no :	Q9HA82
Immunogen :	The antiserum was produced against synthesized peptide derived from human LASS4. AA range:41-90
Specificity :	LASS4 Polyclonal Antibody detects endogenous levels of LASS4 protein.
Formulation :	Liquid in PBS containing 50% glycerol, 0.5% BSA and 0.02% sodium azide.
Source :	Rabbit
Dilution :	Western Blot: 1/500 - 1/2000. Immunohistochemistry: 1/100 - 1/300. ELISA: 1/10000. Not yet tested in other applications.
Purification :	The antibody was affinity-purified from rabbit antiserum by affinity-chromatography using epitope-specific immunogen.
Concentration :	1 mg/ml
Storage_stability :	-20°C/1 year
Msds :	MSDS_Antibody.pdf
Other_name :	CERS4; LASS4; Ceramide synthase 4; CerS4; LAG1 longevity assurance homolog 4
Molecular Weight :	46KD

Product Images



Western Blot analysis of various cells using LASS4 Polyclonal Antibody