

## LAT Polyclonal Antibody

Catalog_no :	AT2539
Applications :	WB,ELISA
Reactivity :	Human,Mouse,Rat
Category :	抗原抗体
Size :	100µg/50µg/20µg
Gene_name :	LAT
Protein_name :	Linker for activation of T-cells family member 1
Humangene_id :	<a href="#">27040</a>
Humanswissprot_no :	<a href="#">O43561</a>
Mousegene_id :	<a href="#">16797</a>
Mouseswissprot_no :	<a href="#">O54957</a>
Ratgene_id :	<a href="#">81511</a>
Ratswissprot_no :	<a href="#">O70601</a>
Immunogen :	The antiserum was produced against synthesized peptide derived from human LAT. AA range:191-240
Specificity :	LAT Polyclonal Antibody detects endogenous levels of LAT protein.
Formulation :	Liquid in PBS containing 50% glycerol, 0.5% BSA and 0.02% sodium azide.
Source :	Rabbit
Dilution :	Western Blot: 1/500 - 1/2000. ELISA: 1/5000. Not yet tested in other applications.
Purification :	The antibody was affinity-purified from rabbit antiserum by affinity-chromatography using epitope-specific immunogen.
Concentration :	1 mg/ml
Storage_stability :	-20°C/1 year
Msds :	<a href="#">MSDS_Antibody.pdf</a>



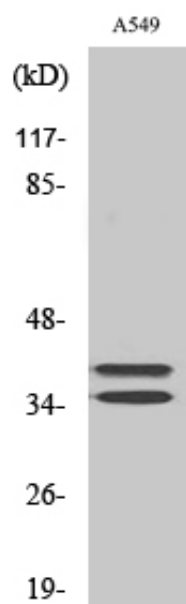
Other\_name : LAT; Linker for activation of T-cells family member 1; 36 kDa phospho-tyrosine adapter protein; pp36; p36-38

---

Molecular Weight : 28KD

---

## Product Images



Western Blot analysis of various cells using LAT  
Polyclonal Antibody diluted at 1 : 500